

NOVEMBER 2024

The Bathford Bulletin

For the residents of Bathford, Shockerwick and Warleigh



Culture Sharing in Bathford

NEWS FROM SHOCKERWICK HOUSE ON PAGE 17

TWINNING NEWS ON PAGE 7



LOOKING FOR CARE?

For 13 years, our professional, locally-based Care Experts have enabled our customers to stay safe and happy at home, for as long as they so desire. We are proud to provide empowering, life-enhancing care to Bristol and BANES residents.

- ♥ Home care
- ♥ Live-in care
- ♥ Hospital discharge reablement
- ♥ Dementia and Alzheimer's care
- ♥ Parkinson's care
- ♥ Respite and holiday care
- ♥ MND care
- ♥ Stroke care
- ♥ Physical disabilities
- ♥ Palliative and end of life care

From a one hour visit to live-in care, expect your care, your way.

Bluebird Care Bristol, Bath & NE Somerset

01179 505855

bluebirdcare.co.uk



The Bulletin Needs You!

We hope you enjoy the Bulletin when it drops through your door ten times a year. In order to keep this valuable resource going, the editorial team are in need of some help!

We meet at the beginning of each month to drink tea and eat cake.... oh and of course, to share ideas and plan the upcoming edition. We discuss the articles that have been sent in by our valued contributors and work out the running order etc.

Every so often (particularly in the summer months) we find that there aren't quite enough people to share out tasks such as collating articles, editing copy, spell checking etc. so if you feel you could spare 3-4 hours a month to lend a hand you would be so welcome to join us.

We are a friendly bunch and its a lot of fun! So why not come along to a meeting and see how it feels. You don't need any publishing experience and training can given if necessary.

If you are interested in any aspect of publishing (or simply sharing some tea and cake) we would love to hear from you, so please drop us a line at bathfordbulletin@gmail.com

December copy deadline

Contributions and advertisements are welcome, up to but no later than **15 November** via: bathfordbulletin@gmail.com

The Editorial Team

- Hillary Carr – Editor & Advertising
- Maureen Breeze – Editor
- Kath Shayler – Creative
- Helen Keelty – Editorial
- Adrian Raybould – Editorial

Printed by

Corsham Print on paper from sustainable resources, using bio-degradable inks and low energy production.

www.corshamprint.co.uk

WELCOME

Welcome to November's issue.

The clocks went back on 27 October, and summertime ended – did it ever start this year? We must have missed that. A return to flooded roads and rugby field – déjà vu anyone?



Ali Creighton continues her compulsive guidance on **dog training** and in this issue, covers how to approach selecting a rescue dog on **page 8**. Remember, that dog is for life. And PLEASE... around November 5, respect all pets and animals by minimising or avoiding fireworks.

Maureen's excellent tour of three local arts centres within easy reach of Bathford concludes this month on **page 11** with a view into **Larkhall's Rondo Theatre** which offers a diversity of cutting-edge theatre and new comedy acts.

In the first of our articles featuring village organisations, our centrespread this month (**pages 12/13**) features an insight into the significant presence that **St. Swithun's Church** contributes to Bathford village life. There's an open heartfelt invitation for you to get involved and enjoy the many opportunities they offer – and you don't have to be a person of faith, all are welcome.

The Church continues to feature as the focal point for the annual parade from the Village Club/British legion to the service at St. Swithun's on **Remembrance Sunday (20 November)** to remember those that have served our nation in the military or associated services. Details of the procession on **page 5** and the service on **page 17**.

Talking of serving, the **LINK transport service** for patients to and from medical appointments is desperately looking for drivers to maintain the service to your community. Please see if you can help them with a few hours of your time.

Only 54 days to Christmas! We'll see you in December.

Editorial Team

Image: www.freepik.com

camella

beautifully boutique



Bathford £950,000



Ashwicke £900,000



Batheaston £550,000



Kingsdown £575,000



Colerne £450,000



Colerne £425,000

www.camella.co.uk

01225 255 321

hello@camella.co.uk

246 High Street, Batheston

New Bearflat branch launching November 2024

BATHFORD SOCIETY TALK

September 2024

Eve Bickerton, Archivist at the Somerset Heritage Centre, Taunton, spoke on what historic documents are held there, in particular for our talk on criminals. They date from 700 AD up to today and cover murders, burglary and various petty crimes. She described the Assize system whereby a judge held court at the various county courts several times a year, the last in Somerset being at Shepton Mallet. A number of interesting cases were described showing how quite minor crimes incurred severe punishments, ranging from being placed in the stocks, prison, transportation, and even hanging. The Assize system ended in 1972 when the Crown Court system of today was introduced.

David Howells

NEXT GATHERING

AGM and Social 19:30 for 20:00, 25 November, Parish Hall.

In accordance with past practice, there will be a monumentally short formal meeting followed by a lively and enjoyable social. Non-members welcome. Donations of food and drink gratefully accepted. Wine and cordial will be served.



Sunday 10 November Remembrance Sunday.

Please join us in our parade to the Church to honour our fallen. It is a very special and poignant event and service.

Parade leaves the Village Club at 09:45 to arrive at the church for the 10:00 service, followed by **The Act of Remembrance** at the War Memorial within the church yard at 11:00.

SATURDAY NIGHT LIVE ENTERTAINMENT 20:30 – 23:30

Saturday 2 November | Fun Night – lots of favourite music, music bingo, card bingo, raffle

Saturday 9 November | Poppy Dance – a black-tie event – Live Music with Trena Marie

Saturday 23 November | Free Spirits Band – a 4-piece Rock 'N' Roll Band

BINGO

Friday 8 November – 19:30. Come and chance your luck – lots of fun and lots of winners

JAZZ NIGHT

Friday 22 November – 20:00 | An evening of music from the local 'house band' with plenty of opportunity for any players or singers to join in. Come and join us to play or listen – it is always such an entertaining evening with a wonderful atmosphere

ADVANCE WARNING NEW YEAR'S EVE

Please consider the Club when planning your New Year's Eve celebrations. We have an excellent female singer booked who is certain to provide a fabulous evening of live music. Please call or ask at the Bar about reserving tickets.

Remember you don't have to be a member to use this local venue. You will always be guaranteed a warm welcome, so please come on in.



We're the **Which? Insurance Brand of the Year** for the second year running



Whether it's for your car, home, farm or business, for quality insurance you can rely on, join us today.

Contact NFU Mutual Bath on **01761 239382**



The National Farmers Union Mutual Insurance Society Limited (No. 111982).

NEW MACDONALD'S FARM

Regenerative Farming

THE MAC SHACK FARM SHOP

open 7 days a week (inc. holidays) from 8am – 8pm
selling the freshest pasture free-range organic eggs, raw cold filtered honey, organic dairy, freshly baked sour doughs (Tues & Fri), meats, jams and more.

THE OLD CHICKEN SHED CAFÉ

open Sundays 10am - 4pm
selling tea & coffees, cakes, toasties and bacon & egg rolls!

Closes Farm, Kingsdown SN13 8DG
01225 519820

TWINNING EXCITEMENT!

Our 20th Wedding Anniversary (well sort of!)

2025 will mark twenty years since our two communities of Bathford and Artannes-sur-Indre tied the knot in Bathford Parish Hall with an important 'wedding' ceremony. Don Foster, our MP at the time, was present at the proceedings and our Friendship Charter was signed by the Mayor of



Artannes and Shirley Beazer, Chair of Bathford Parish Council. Gifts were also exchanged in front of a

packed audience of Bathford and Artannes residents and a weekend of fun followed. Our commitment is bound within the Charter, which is on display in the Parish Hall.

How will we celebrate this momentous milestone? Our friends in Artannes are excited about welcoming us for a memorable celebratory weekend between **Thursday, 10 April - Monday, 14 April 2025**. These dates have been chosen to fall in the school Easter holidays, so that as many families as possible can join in.

Previous visitors to Artannes will confirm what a wonderful, warm, experience visits are. Those considering visiting for the first-time can be assured of a friendly welcome when they stay in an Artannais home. All accommodation is offered free with the only expenses being meals in restaurants and visits to places of interest.

In the past, transport has been in private cars with some people going by air or train. Please be encouraged that if you'd like to join the visit, there are ways of sharing car spaces or going with others on public transport.

So please **SAVE THE DATES** and consider making the trip to France and sharing the pleasure of the hospitality and friendship we know we will receive.

To register your interest or for further information email: bathfordtwinningassociation@gmail.com or call **01225 852444**



Loose covers and curtains

Individually made to suit your requirements

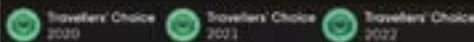
FREE ESTIMATES

Sue Hocking
01225 865706
07748 780985

Email:
sue.hocking@talktalk.net

Easton Spice

Take some of the magic home with our delivery service!



Open 7 days a week from 5pm till 10pm
Call - 01225858007 or order online
www.eastonspice.co.uk

St Swithun's Film Club

St Swithun's Film Club is pleased to bring you a delightful British comedy, 'What we did on our Holiday' (2015 cert 12), starring David Tennant, Billy Connolly and Rosamund Pike. A family with three children set off to a birthday party in Scotland for Gordie (Connolly), but chaos, secrets and hilarity ensues throughout an unforgettable holiday. Come and join us



Monday 25 November at 14:00 and enjoy complimentary tea and cakes after the film (suggested donation £3). No need to book - everyone welcome.

Any queries phone Keith Milner **01225 859222**.

ASK THE TRAINER

Your questions answered by
Ali Creighton at Doodle Dogs Training



Q What advice can you offer for rehoming a rescue dog?

A First, thanks for considering a rescue dog.

Any dog needs to match your lifestyle if you're both to be happy and safe. Be honest about what you want and what you can offer (they may be different)!

Do you want a young dog to train; can you cope with adolescence or how about an older dog who just wants to snooze? Do they need to be toilet and/or car trained? Can you handle separation anxiety or medical needs? Must they be good with children, wildlife and/or other pets?

Ask about the dogs background, as past experiences shape future behaviour and trauma can be life-changing. Does the rescue centre provide free behavioural help - should you need it?

Pick a rescue centre that asks questions, has a contract and will take the dog back if necessary, but please consider the ramifications of a failed adoption for both you and the dog.

You could adopt from abroad but get plenty of information. Romanian rescues have a reputation for trauma as Rory Cellan-Jones discovered when he adopted 'Sophie from Romania'.

Choose carefully and get everything ready before they arrive. They must feel safe. Provide a comfy bed and leave them to settle in. Don't disturb them, invite friends around or walk them. Wait till they approach you. This could take hours, days or weeks but trust is key. Then enjoy your time together - a dog is for life.



To ask a question, please send an email entitled 'Ask the Trainer' to: bathfordbulletin@gmail.com
Please note that this column can only give general advice, not tailored to any specific dog and not all questions can be answered. www.doodledogs.uk



BATHFORD VILLAGE SHOP & CAFÉ

Apple Day

A big thank you to all the enthusiastic young helpers who participated in Apple Day!

From cleaning and chopping to grinding and pressing fresh apple juice, you all worked hard at the various stations and helped keep this wonderful tradition alive. The freshly baked apple strudels were such a hit — they sold out in just 15 minutes! It was a fun-filled day for everyone involved.

We'd also like to extend our gratitude to **Orchard Share** for providing all the equipment and assisting with the setup. We look forward to the next one!

Christmas Orders Pickup Point



We're excited to announce that Bathford Village Shop is once again a designated Christmas order collection point for Larkhall Butcher. Simply place your order on their website and select 'Bathford Village Shop' as your pickup point. Not only will you save on the trip into town, but you'll also avoid the long queues.

And don't forget to keep an eye out for our fabulous Christmas stock arriving soon! If you're a BEFA member (the co-operative that owns the Shop), you'll receive an exclusive invitation to our Christmas preview event. Not a member? Pop into the Shop and fill in a form. £10 buys you one share in the Shop and access to members' benefits including early Christmas shopping.

Image: www.freepik.com

Warm Space

In line with our mission and vision, Bathford Village Shop is pleased to be part of the BANES Council's Live Well Warm Spaces directory this winter. We will be offering a warm, welcoming space for those in need, with a cozy place to sit and enjoy a hot drink while saving on energy bills.

Bath & North East Somerset Council



L P PROPERTY DEVELOPMENTS

Property maintenance, renovation and improvement
Over 20 years experience of all aspects of property maintenance, renovation and improvements

Period property specialist

Andy Perkins

07840 145029 01225 743319

www.lawrence-perkins.co.uk





PRECISION
PILATES STUDIO

PILATES
REFORMER
BARRE
YOGA

Small class numbers
Classes for all abilities
One-to-one sessions
Air ventilation system
Free two-hour parking

precisionpilatesstudio.co.uk



Award
winning
studio



AUCTIONEUM

FINE ART AUCTIONEERS & VALUERS

NOW ACCEPTING
CONSIGNMENTS

BOOKS, MANUSCRIPTS AND
WORK ON PAPER
13 NOVEMBER

TWO-DAY FINE ARTS & ANTIQUES
21 NOVEMBER

AUCTIONEUM OF BATH

Tel: 01225 251503

Broadlands Farm, Box Road,
Bathford, BA1 7LR

info@auctioneum.co.uk

AUCTIONEUM OF BRISTOL

Tel: 0117 967 1000

1 Hanham Business Park, Memorial Road,
Hanham, Bristol, BS15 1JF

www.auctioneum.co.uk



Based at Broadlands Fruit Farm in Box and just a stone's throw from the centre of Bath. Our saleroom offers a suite of specialist auctions throughout the year, from fine art and antiques to retro 20th century design, toys and memorabilia.

Whether you're an auction novice or a seasoned trader, we'd love to welcome you through our doors!

- Prompt and free home visits and appraisals
- Full collection service available
- Probate services - comprehensive and total house clearance work undertaken
- Global market exposure - every lot published at auctioneum.co.uk and saleroom.com
- Superior quality fully illustrated online catalogues



RONDO

T H E A T R E

In our final review of local Arts venues, Pippa Thornton, Deputy Director of Larkhall's Rondo Theatre, gives an insight into its history and activities.

The theatre is on St Saviour's Road in the centre of Larkhall village. The former St Saviour's Church hall was purchased by Doreen and Wilf Williams in 1976. Initially used as a rehearsal room for local amateur operatic and dramatic groups, the theatre was gifted to the newly created Rondo Trust for the Performing Arts in 1989. Thanks to the dedication of the local theatre community and lottery grants in 1996 and 2003, the Rondo was gradually transformed into a perfect miniature theatre. With an extension of a first floor for office and dressing room space, and the installation of a full lighting rig and sound equipment, the Rondo is able to stage a wide range of professional and amateur theatre productions, music and comedy events. We are run by a small team of staff and volunteers and receive no regular public funding – although grants during the Covid-19 pandemic, along with an outpouring of local community support, saved the Rondo from closing its doors forever in 2020.

"We think that the Rondo is the South West's most welcoming and adventurous Fringe Theatre!"

Since establishing as a public theatre in 1989, the Rondo has cultivated a reputation as one of Bath's best loved venues and is well known for attracting cutting-edge new theatre and some of the most exciting up-and-coming acts on the comedy circuit, as well as big-name stars wanting to test out new work in an intimate setting. **Our November programme includes ballet and comedy, as well as plays by Tom Stoppard and Tennessee Williams.**

We have recently launched the **Revamp the Rondo Campaign**, which aims to raise £15,000 through public donations and seat sponsorship. The project, estimated to cost £75,000, will allow for the purchase of newer and more comfortable seating (the current seats have been in place since 1989 and were purchased second-hand from a closing cinema!), as well as other building improvements which will futureproof the venue.

You can find out more about the Rondo's Autumn Programme along with the Revamp the Rondo Campaign – go to: www.rondothatre.co.uk



A building and churchyard

The Church is open every day to visit and wander round. Look out for the grave of **Ann Nelson**, sister of England's naval hero **Horatio Nelson**. The church has played host to many activities such as the **Village Choir** rehearsals and concerts, a location for the **Christmas Fayre** and other public concerts.

Bringing people together

There are a number of regular activities that bring people together.

Every week in term time, the **Mums and Toddlers Group** enjoys a chat with tea and toast on a Friday morning.

Re-Connect reunites year 7 and year 8 children with former friends who have gone on to other schools on the first Sunday of each month at 16:30.

Providing a significant entertainment and social function for the community, the Church runs the monthly **Film Club** showing contemporary films, followed by complimentary tea and cakes, at 14:00, usually on the last Monday of the month. It has also recently begun a series of Concerts '**Music on a Sunday Afternoon**', followed by refreshments, performed by a wealth of talented local musicians.



Remembrance

The Church features centrally in the annual **Remembrance Sunday service in November**.

The procession from the **Village Club/Royal British Legion** to the church – accompanied by a club of motorcycle outriders – and the lone trumpeter playing the Last Post, always draws many from our community to attend this moving ceremony.

Another occasion for the whole community is a special annual service to remember loved ones. This year the **All-Souls Service** is on 2 Nov at 16:00. It is possible to have the name of the loved one read out at the service.



A HEARTBEAT IS THE VITAL INGREDIENT OF LIFE

But what constitutes the heart of OUR community?

The people, who give it its character. The organisations that offer the necessities or niceties for life such as the School, the Parish Council, the Village Shop, the Pub. The social activities via the sports or social clubs and our many and varied groups. And then, another major contributor to our communal heart is St. Swithun's Church.

This month, we take a look inside to see what St Swithun's offers beyond a place of worship and traditional services – and we were very surprised. It's a staggering amount!

Adding to the social calendar of the community - with a purpose

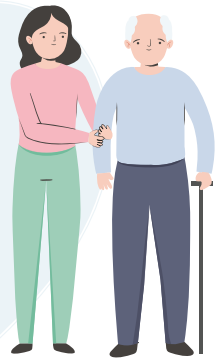
St Swithun's makes a tremendous contribution each year by fund raising for those in need and in doing so provides great public events. The congregation and associated friends in the past year have organised for example, the very successful **Mystery Meals**, the annual **Harvest Supper**, the regular **Quiz Night** and a **Cake Sale**. These along with the afternoon concerts have raised well over £4000, which has been given to both local and international charities. The Church's aim is to share what it has and bring hope to help others. These events seem a great way to offer something to the community and in turn, to those in need.

The **Lent Lunches**, open to all, gave valuable insights into the work done by charities. These included **Mary's Meals** who feed schoolchildren throughout the world and the local **Jamie's Farm** which, through farming, helps UK schoolchildren with their struggles in life.



Pastoral Care for all

Rev. Laretta Wilson and Curate Jane Hoe along with a dedicated team of Church volunteers visit folk at home or in hospital to give comfort, advice or practical help to those in need. We heard of a comment from one recent recipient who said "I was so surprised that people cared enough to come and spend time with me when I was convalescing following surgery. And since then, some have become firm friends".



Broader Roles

Something that was a surprise...

The **Parish Hall** is actually owned by the Church and provides a venue for so many different groups - **exercise classes** and **self-defence, societies and associations, quizzes, suppers** and of course, the theatre for the **Bathford Players'** productions.

St Swithun's is also firmly associated with **Bathford Church School**. They share a vision, '**Grow, Care, Serve, Share**' which frames the way they approach their work.

Laretta or Jane takes an assembly each week and once a term, the children go to the Church for a special service. Laretta is also pleased to be a School Governor.



Our journey exploring the wider community role of St Swithun's certainly left us in no doubt that it is championing the cause of community spirit and is part of the heartbeat of Bathford.

Their diverse community offering and its care for the humanity and welfare of all residents, whatever their faith or no faith, is clearly evident.

Remembering

Jeanette Kremer 1937 - 2024

Alex Kremer, Jeanette's son, describes his Mother's life.

Jeanette was happy in Bathford, and Bathford made her very happy. Moving from Reading to Bath 30 years ago, she briefly owned a tiny flat on Queens Square but when she saw 8 Manor Drive in Bathford, she knew immediately where she wanted to be.

Bathford friends and neighbours, her beloved dogs, the allotments, the Village Shop, St. Swithun's, Browne's Folly, Twinning, the Book Club, chats with fellow dog walkers on the Green... these are what gave joy and meaning to her later years. But the Jeanette that we all knew had a very different earlier life and career.

Jeanette was the daughter of a market gardener from York who went to London to study medicine in the 1950s. Living in Great Russell Street she hung out with avant garde painters and once cooked an exotic dish called 'spaghetti bolognese' for a (then) unknown actor called Tom Conti!

After taking years off to raise her two sons, Dan and myself, Jeanette began studying again to become a consultant radiotherapist achieving 24 post-nominal letters after her name! She took her work very seriously but with utmost humanity; her cancer patients saw her as different from all the other oncologists because she made it her job to heal the person, not just to zap the tumour with physics.

Jeanette had a generous spirit, actively supporting the Hospice movement. She was a Quaker, a supporter of CND (Campaign for Nuclear Disarmament) and the Greenham Common Peace Camps. When the Labour or Conservative parties were veering to extremes, she ran as a Liberal candidate for Bracknell Council.

In her last years she was a very happy person; happy because she didn't have a care. She lived her life on her terms, and she knew what she wanted, and it was with that peaceful indifference that she slipped away on 3 September.



AUTUMNAL DINING OUT IN BATHFORD!

Traditionally when the harvest had been gathered in, people came together to celebrate. There may not have been any farmers at the Harvest Supper on Friday 4 October, but almost sixty residents from the village gathered in the Parish Hall to eat, drink and enjoy being part of the Bathford community. Diners were entertained by a quiz and live music and could try their luck at a tombola. The £650 raised was donated to Médecins Sans Frontières.

The following Friday evening saw the Village Shop Autumnal Celebration Supper Club dinner. Sold out well in advance, diners enjoyed three wonderful courses, plenty to drink and a great atmosphere. Over £500 was raised for BEFA funds. A big thank you to everyone who made the evening so special.

The Supper Club will return again in Spring 2025.



SAD NEWS

John Lewis of Garstons passed away recently. A Service of Thanksgiving for his life will be held at Walcot Methodist Church on **Monday 11 November, at 14:30.**

Afternoon tea will be served at Kingswood School Upper Playing Fields Building (opposite Beckford Tower) at 16:00. John's wife Patsy says all are welcome to attend both events.



THE MIDGE SONG

While walking the West Highland Way in August, come rain or Scottish midge, friends Catherine and Anke wrote this amusing poem to keep their spirits up. Which distracted them enough to ensure they went the wrong way for two hours without realising....!

I'm a wee beastie
Who's out for a feastie
On walkers and bikers alike
To blight them we strive
And to eat them alive
And ruin their lovely hike

We lurk by the stream
For the swimmers who scream
As we sink in our tiny wee teeth
Or under the beeches
When they lower their breeches
For a moment of natural relief

A newly pitched tent
With an open-air vent
Is a bistro with Michelin stars
And your repellent spray
Can't keep us away
So, we'll cover your body with scars

On the next morning
The hikers still yawning
We conquer their breakfast and lunch
We're there in their bowls
And granary rolls
For insects in every munch

Catherine Tait and Anke Wagner

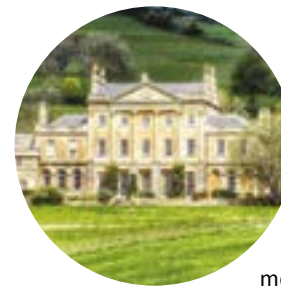


BLACK FRIDAY SALE

UP TO 25% OFF
ALL VOUCHERS
until 30th November

Including stays, spa and dining experiences

homewoodbath.co.uk | 01225 580 439 | @homewoodbath



NEWS FROM SHOCKERWICK HOUSE

This month some of our staff wanted to share their cultural heritage and show our residents how their families celebrate Onam – the biggest festival in the Indian state of Kerala. They put on the most wonderful performance with traditional singing and dancing. We were also completely blown away by their beautiful traditional clothes! Thank you to Tinu, Tijo, Sneha, Elizabeth, Shoby, Jiju, Teena and Elmy for sharing this with us.

In addition, this month we have enjoyed a Mad Hatters Tea Party and taken part in Oktoberfest! We all had great fun! Please follow us on Facebook for more details about our upcoming events: www.facebook.com/BupaCareHomeShockerwickHouse



FROM ST SWITHUN'S

Remembrance

November is the month for Remembering- not just 'Remember, Remember the 5th of November' but also Remembrance Sunday when we honour those who served and died in war, and also our Annual service of Thanksgiving and Remembrance for departed loved ones.... A time to remember and give thanks for the lives of those we see no longer.

This year the Thanksgiving Service is **Saturday 2 November at 16:00** and the Remembrance Sunday service is **Sunday 10 November at 10:00**.

Remembering is sometimes painful and I always find both these services very moving. However, they are also hopeful - we hold our sadness in the hard things that have been, alongside the love that keeps us and will never let us go. Please do feel very warmly invited to them both.

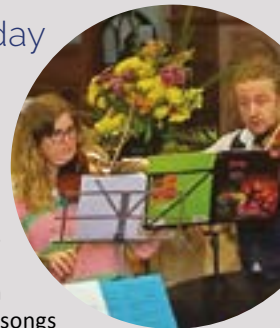
Rev Laurretta

Music on a Sunday Afternoon

We are so lucky to have such wonderful musicians living in our community!

The September concert programme drew from this great talent. The packed audience were treated to a selection of contemporary songs sung by Bathford Church School choir, followed by John Keelty's witty rendition on bassoon of the tune, 'Lucy Long'. Nick Breeze performed the piano piece Shackleton's Cross, which was inspired by Seago's painting of the explorer's final resting place. He then contrasted this with the virtuosic Carnival of Venice on the flugelhorn. Archie Veitch-Edwards followed, captivating the audience with three jazz and blues standards on saxophone, before the concert was rounded off by the sophisticated sounds of our own Bathford Jazz Trio.

The afternoon was wrapped up with a cream tea and successfully raised almost £400 for local charity, Jamie's Farm. The concert was the first in a planned series of fund-raising concerts. The concerts will kick off again on January 19th - details to follow.



EXPERIENCED PERSONAL TRAINERS SPECIALISING IN FITNESS FOR THE OVER 60's

PETTEMERIDES PERSONAL TRAINING

Expertise in exercise prescription for those with:
 Medical Conditions | Neurological Conditions | Lower Back Pain
 Hip and Knee Replacements (Pre & Post Op)

MOVE BETTER, FEEL BETTER...

Personal Training Supervised Gym Sessions
 Physiotherapy Sports Massage
 Pay As You Go Sessions
 Osteopathy

PAY AS YOU GO

Tuesday & Friday
 3:30pm-7:30pm

239 LONDON ROAD EAST,
 BATHEASTON, BATH, BA1 7RL
 T. 07779572761
 e. hpettemerides@ymail.com

LINK NEEDS MORE VOLUNTEER DRIVERS

Time on your hands to help?



Bathford LINK is a service provided by volunteer drivers along with a coordinator, who offer door to door transport for people otherwise unable to get to health related appointments.

As LINK appeals for more volunteers to come forward and be drivers, Michael Carmel explains why he joined Link as a driver in 2018 – and still enjoys it!

“I joined Link almost as soon as we arrived in Bathford, because I knew that it could be enjoyable as well as useful. It works well for me because I enjoy driving. Batheaston surgery is the top Link destination – and several Bathford facilities also feature – but I’ve had occasion to explore many new areas nearby, from Peasedown St John to Bradford-on-Avon, Weston Village, Winsley and more.

Mostly it’s about meeting people – good company and usually with a range of life experiences to share. Some have surprising talents too, like the gifted artist I was invited to take to a clinic in Bath! People always seem very grateful for the help, often disproportionately to the small effort involved.

I have rarely been called upon more than once in any week. I can of course turn down any request that is inconvenient – even if this throws work onto the unsung hero of Link – the coordinator who takes the phone calls. Drivers’ expenses are covered by the charity at 50p per mile, together with costs such as toll charges, although our time is purely voluntary.



Are my fellow drivers similarly motivated? Who knows? Some are quite elderly, for whom driving is no longer fun. For a few each year it becomes impossible. Some former drivers have become clients, which is great. But we do always need replacements, preferably any younger retirees. The need for new drivers has become a serious issue, especially since Covid.”

Bathford needs Link to continue offering help to those who need it. If you think you can help, please contact the secretary Rob Small on randcsmall@gmail.com



BATHEASTON GARDEN GROUP

'Organic Gardening - Happy Plants, Happy Minds'. – A talk by Nikki Hope

19:30 on Wednesday 13 November at Bathford Parish Hall.

Horticulturist Nikki Hope runs an organic gardening consultancy and garden design service. Her talk will take us through the annual cycle in an organic garden with tips and advice on topics ranging from plant selection and pest control to compost making and crop rotation.

All welcome. Admission is free to Batheaston Garden Group members. Non-members £5. Pay on the door, no need to book. For information on Batheaston Garden Group please visit www.batheastongardengroup.co.uk



Mark Ricketts

t: 07765 193290

www.trroofingandscaffolding.co.uk

email: ricketts2015@gmail.com

Listed and historical buildings
a speciality

All aspects of roofing

Flat roofs

Pitched roofs

From repairs to replacement

AROUND THE GARDEN

with Kevin Marris



With the Flower show behind me, I haven't been able to just sit back, admiring the autumn colours with their changing effects on my little bit of landscape or eating my way through the fruit and vegetables, feeling a little bit smug (at this time of year the soft fruit is from the freezer). I've been looking at what needs to be done during the winter and not just planning and planting for next year. It's all the things that I wouldn't want people to photograph; like the embarrassment of a water feature that runs out of water by the end of the afternoon. Then there's the decking that I need to treat with decking oil, but I can't work on it because it's been raining so much.

There's also a bed that's riddled with couch grass. I'll have to dig the whole thing out, rescue all the plants, tease the couch roots out (yes, I know, they're actually rhizomes), before

putting everything back. And this is a bog garden, so with all the rain, there's some heavy lifting involved. By the way, here's something interesting – did you know that you can buy a brush with bristles made of couch grass roots? Who'd have thought it?

Then there's my honeysuckle; the one I wrote about the first year I was writing for the Bulletin. It was wonderful. But I haven't done anything with it since and now it looks dead on its feet; I have to proceed very carefully and that means slowly unthreading one stem at a time. Why? Because there's a clematis growing through it which has very pretty, small flowers. I must have planted it ten to fifteen years ago, but it's really flourishing just now. So, I might still be working on it come next spring. Wish me luck!

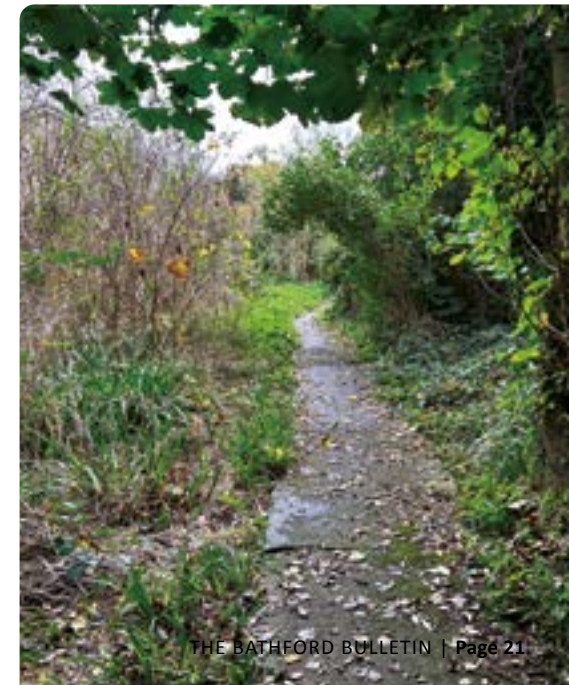
MEADOW PARK ACTION GROUP

The first meeting of **Meadow Park Action Group** took place on 16 October. The group met to discuss the potential development of the old woodland which is Meadow Park amenity land. Our aim is to protect this woodland.

If anyone in the Parish has an interest in ecology, wildlife conservation or land management, we would be really pleased to talk with you.

We would also love to hear from anyone who has lived in the area since Meadow Park was built and would especially appreciate any old photos of the area including this woodland.

Anyone who may be interested in supporting our cause will be most welcome. Please contact Janet Bilton:
janet.bilton@btinternet.com



LOCAL VOICES FOR PEOPLE AND PLANET Batheaston Village Hall, October 8

A dedicated steering group comprising representatives from BANES council, local initiatives and community groups organised two sessions to generate awareness of the issues having adverse effects on our climate and environment: **Transport; Food; Waste & Consumption; Homes, Buildings and Energy; Nature & Wildlife.**

Participants were given advice on what actions and changes we can make to our habitual ways to lessen the adverse effects and benefit the environment and ourselves; they were then invited to identify what actions should be prioritised by BANES and the populace to improve matters.

Surprising facts about the BANES and Bathavon North area, or globally:

- 51% of people in BANES work from home
- Transport produces 34% of greenhouse emissions – 95% of these caused by road transport
- As much as 10% of homes do not recycle; 36% of residents do not put out separate food waste
- Since 1970, global populations of wild vertebrates have reduced by 60%, 835 of freshwater species and 76% of insects
- Local populations of swifts and cuckoos have declined by 91% and 96% respectively

We'll be sharing more facts, information and advice in future issues.

Remedial actions include:

- Use public transport for more journeys, cycle more
- Repair and recycle – find a local repair shop – Repair cafes in Bradford, Corsham, Larkhall, Bear Flat – and planned for Bathford
- Bag and label small electrical items, spectacles, printer cartridges, vapes and batteries in recycling
- Install nest boxes, particularly for swifts, swallows and martins and hedgehog homes; eliminate pesticides
- Turn down the thermostat in the home; reduce the amount of tumble-drying you do; retrofit your home and improve insulation.

SOCIAL EVENTS CALENDAR

The Parish Council has set up a Bathford Events Calendar online for reference when planning your events to avoid any unnecessary clashes.

The link is www.bathford.net/local-information/events

The Calendar will be monitored and completed by Jon Cooper, Clerk to the Parish Council. It is reliant upon event organisers to keep Jon informed of your upcoming events so that it can be up-to-date at all times and help others. Jon will also align the Calendar with the Bulletin's What's On section.

Email clerk@bathford.net with the following information: Event name/date/start time/finish time/venue

FOR YOUR INFORMATION

Check if you are eligible for Pension Credit and the Winter Fuel Payment at gov.uk/pension-credit or call 0800 99 1234

The Parish Council office is located on the left hand side of the entrance to the Village Club. Open 10:30 - 13:30 Monday, Tuesday and Wednesday

The Parish Council is seeking to hire a contractor to maintain open areas of grass throughout the parish – mowing, cutting, strimming – e.g. Recreation Ground, Village Green, High Street, and other locations. If you would like to apply and/or get further information, or if you know someone else who may be interested, please contact the clerk clerk@bathford.net

DATE	TIME	DETAILS	VENUE
Sat 2 Nov	16:00	All Souls' Service	St Swithun's Church
Sat 2 Nov	20:30	Fun Night including music, music bingo, card bingo & raffle	Village Club
Sun 3 Nov	10:00	Service of Holy Communion	St Swithun's Church
Sun 3 Nov	16:30 & 17:30	Re:Connect for Children in Years 7 and 8	St Swithun's Church
Fri 8 Nov	19:30	Bingo	Village Club
Sat 9 Nov	20:30	Poppy Dance including Live Music with Trena Marie	Village Club
Sun 10 Nov	09:45	Remembrance Parade Departs Village Club	Village Club
Sun 10 Nov	10:00	Remembrance Sunday Service	St Swithun's Church
Sun 10 Nov	11:00	Act of Remembrance at the War Memorial	St Swithun's Church
Sun 10 Nov	16:00	Children's Afternoon Service (for children 4-11 and their families)	St Swithun's Church
Mon 11 Nov	19:30	Bath Sailing Club: Talk on RNLI	Village Club
Wed 13 Nov	11:20 - 12:05	Mobile Library	Dovers Park by School
Sun 17 Nov	10:00	Service of Holy Communion	St Swithun's Church
Fri 22 Nov	19:30	Jazz Night – Live Music from the local 'house band'	Village Club
Wed 13 Nov	19:30	Batheaston Garden Club Talk	Bathford Parish Hall
Sun 17 Nov	15:00	Sunday Afternoon Church Concert followed by cream tea	St Swithun's Church
Fri 22 Nov	19:30	Jazz Night – Live Music from the local 'house band'	Village Club
Sat 23 Nov	20:30	Live Music – Free Spirits Band	Village Club
Sun 24 Nov	10:00	Welcome Church, with guest speaker Freda Carey	St Swithun's Church
Sun 24 Nov	16:30	Evening Prayer (refreshments at 16:00)	St Swithun's Church
Mon 25 Nov	14:00	Film Club – 'What We Did On Our Holiday'	St Swithun's Church
Wed 27 Nov	11:20 - 12:05	Mobile Library	Dovers Park by School
Thu 28 Nov - Sun 15 Dec		Bath Christmas Market	Bath City Centre

SAVE THE DATES

Mon 9 Dec	19:30	Bath Sailing Club: Talk on Whales and Dolphins	Village Club
Fri 20 Dec	17:45	Carols on the Green with mulled wine and mince pies	Village Green
Tue 31 Dec		New Year's Eve Celebrations	Village Club
Thu 10 - Mon 14 Apr		Twentieth Twinning Anniversary	Artannes-sur-Indre

NEXT COUNCIL MEETING

Monday 18 November 19:00 Bathford School

Residents are welcome to attend and raise matters with the Council in the first ten minutes.

Contact: clerk@bathford.net | Tel. 01225 858220

The Bathford Bulletin and Bathford Parish Council cannot accept responsibility for the goods and services advertised.

whiteley helyar

dedicated residential estate agents



Successfully selling
property in Bathford
for over 40 years

6 Princes Buildings, Bath, BA1 2ED | 01225 44 75 44
rupert@whiteleyhelyar.co.uk | www.whiteleyhelyar.co.uk