

MARCH 2024

# The Bathford Bulletin

For the residents of Bathford, Shockerwick and Warleigh



**Don't forget!**  
**Mothering Sunday - 10th March**

VISIT THE BATHFORD VILLAGE SHOP TO SEE THEIR  
RANGE OF BEAUTIFUL CARDS

[www.bathford.net](http://www.bathford.net)



THE BIRD  
BATH

CELEBRATING  
SEASONALITY

thebirdbath.co.uk | 01225 580438 | @thebirdbath\_



Cover image by Gemma Adams - unsplash.com

## The Editorial Team

Hillary Carr - Editor & Advertising  
Maureen Breeze - Editor  
Helen Keelty - Editorial  
Kath Shayler - Creative

We welcome all articles, images and notifications of births, deaths and marriages. Please send details to: [bathfordbulletin@gmail.com](mailto:bathfordbulletin@gmail.com)

## The Bathford Bulletin needs you!!

Fancy having a go at writing articles for the Bulletin? Interested in joining the Editorial Team?

Can you use InDesign or Microsoft Publisher and have some spare time to help with the formatting?

**You would be most welcome!**  
Email [bathfordbulletin@gmail.com](mailto:bathfordbulletin@gmail.com) if you are interested or would like to know more.

## April issue copy deadline

Contributions and advertisements are welcome, up to but no later than **15 March** via: [bathfordbulletin@gmail.com](mailto:bathfordbulletin@gmail.com)

The Bathford Bulletin is produced and delivered free to all homes in the Parish, 10 months a year on an entirely voluntary basis.

## Printed by

Corsham Print on paper from sustainable resources, using bio-degradable inks and low energy production.  
[www.corshamprint.co.uk](http://www.corshamprint.co.uk)

## WELCOME TO OUR MARCH ISSUE...

...and a warm welcome to Spring at long last!

We are delighted to be covering a host of diverse events throughout March. Rev'd Lauretta has lined up four excellent **Lent Lunchtime talks** with fascinating speakers on many diverse subjects - well worth attending. Also, quizzes at the **Rugby Club**, and for **Bathford School** - see What's On (P19) for details. The forthcoming **Mystery Meals** (see P5) look extremely mouthwatering; more details in the April issue.

Our centre spread this month features the **Village Club (RBL)**. It's very much the social core of Bathford providing entertainment and events for all of us. If you haven't been to the Club before or your visits have lapsed, give them another look. The new monthly **Jazz Evenings** have introduced a whole new audience to the Club and provided a showcase for our many local talented musicians. And the Club annually preserves the honour of remembrance for those who gave their lives in conflict.

If you were unfortunate to miss the Bathford Players' excellent production of **'Peter Pan, the pantomime'**, which played to sell-out audiences, you missed a treat. Read all about it on P17.

We were delighted to get some great comments about February's magazine. "**Your best issue yet**"(JM) and "**The February Bulletin looks great! We always appreciate the huge amount of work that goes into producing it.**" (JT). We're indebted to the significant input from our contributors. Similarly, our advertisers whose revenue provides the lifeblood that allows this magazine to be self-financing and **free** to you the readers.

Finally folks, don't forget that **March 10** is **Mothering Sunday!** Get your cards, gifts, flowers and restaurant bookings sorted now!

Editorial Team



# AUCTIONEUM

FINE ART AUCTIONEERS & VALUERS

## NOW ACCEPTING CONSIGNMENTS

HOME, ANTIQUES & COLLECTABLES

25<sup>TH</sup> MARCH

DESIGN & MID CENTURY

28<sup>TH</sup> MARCH

AUCTIONEUM OF BATH

Tel: 01225 251303

Broadlands Farm, Box Road, Bathford, BA1 7LR

info@auctioneum.co.uk

AUCTIONEUM OF BRISTOL

Tel: 0117 967 1000

1 Hanham Business Park, Memorial Road, Hanham, Bristol, BS15 3JE

www.auctioneum.co.uk



Based at Broadlands Fruit Farm in Box and just a stone's throw from the centre of Bath. Our new saleroom will offer a suite of specialist auctions throughout the year, from fine art and antiques to retro 20th century design, toys and memorabilia.

Whether you're an auction novice or a seasoned trader, we'd love to welcome you through our doors!

- Prompt and free home visits and appraisals
- Full collection service available
- Probate services - comprehensive and total house clearance work undertaken
- Global market exposure - every lot published at auctioneum.co.uk and saleroom.com
- Superior quality fully illustrated online catalogues



Image by Freepik



## MYSTERY MEALS

You are all warmly invited to take part in a series of fundraising lunch and supper parties in private houses, with all of the proceeds going to the local charity GENESIS FOOD BANK. Taking place on 30 April, 1, 2, 4, 9 and 10 May, the meals will generate valuable income for this very worthwhile charity. A three-course meal with wine will cost £25pp.

Details of the menus with dates, will be available in the April edition of The Bathford Bulletin. All the hosts/hostesses live within one mile of the Village Shop.

There is an element of surprise, as you will not know which home you are going to until the morning of the event!

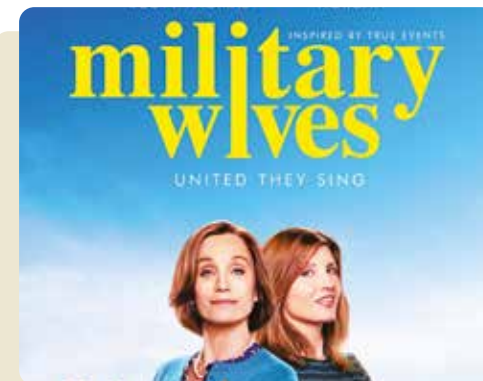
If you have questions meanwhile, please contact Jeremy Furber, on behalf of St Swithun's Church, by email at [jfurber40@gmail.com](mailto:jfurber40@gmail.com) or call on 01225 542582.

## MAKE A DIFFERENCE IN BATHFORD'S FUTURE

The Parish Council has a post available for a new Councillor.

Becoming a Councillor gives you the opportunity to make a major contribution to the welfare of Bathford's community. That involves helping to maintain the public assets, improving the services and the quality of life in Bathford, and generating new ideas and initiatives. You also help to plan the future of our community to help the diverse range of ages and interests of the residents. Specific areas of interest include Highways, Communications, Finance/Admin, Amenities, and Planning.

The post is open to ALL ages. If you'd like to know more, please contact Hillary Carr at [hcarr@bathford.net](mailto:hcarr@bathford.net), tel. 07767 383095 or via the Clerk at [clerk@bathford.net](mailto:clerk@bathford.net)



## ST SWITHUN'S FILM CLUB

We have a real 'feel good' film for our March showing, 'Military Wives'. It is based on a true story and stars Kristin Scott Thomas in a heartfelt story of friendship, love and support on the home front as well some fantastic songs. (Cert 12 2019). Please join us at 14:00 on Monday 25 March and enjoy complimentary tea and cakes after the film (Suggested donation £3).

No need to book. The film club is always held on the 4th Monday of each month. Any questions please phone Ann Wade on 07766554649.

## BATH SAILING CLUB



This season's talks conclude on 11 March with: 'From Jutland to the Jetty at Portsmouth – A Centenary of RN Aircraft Carriers & Naval Air Power' by David Verghese, Naval Researcher

Village Club, Bathford 19:30 for 20:00

David is also giving a naval talk to the Bath Royal Literary and Scientific Institution (BRLSI) in Bath, but this topic has recently made the news. Do come along to learn more and meet us. Members of the public are very welcome. To support the speaker's charity, a donation of £4 will be welcomed on the night.

David Le Lohé

## Local Bath Container Storage Rental

- New 20ft containers
- Domestic & Business Storage
- Short & Long-term hire
- 24hour CCTV & secure gated entrance
- Weekday access

Broadlands Fruit Farm, Box Road, Bathford, Bath BA1 7LR

Call 01225 251303 (Option 4)

## NEW MACDONALD'S FARM

Regenerative Farming

### THE MAC SHACK FARM SHOP

open 7 days a week (incl holidays) from 8am - 8pm selling the freshest pasture free-range organic eggs, raw cold filtered honey, organic dairy, freshly baked sour doughs (Tues & Fri), meats, jams and more.

### THE OLD CHICKEN SHED CAFÉ

open Sundays 10am - 4pm selling tea & coffees, cakes, toasties and bacon & egg rolls!

Closes Farm, Kingsdown SN13 8DG

01225 519820

## FROM ST SWITHUN'S

Dear Friends

**I wonder if you enjoyed pancakes on Shrove Tuesday? Did this help mark the beginning of Lent on Ash Wednesday?**

Over the years Christians have chosen to focus on prayer, fasting and acts of service during Lent, to identify more closely with Christ and his 40 days in the wilderness. Whether you choose to pray more deliberately, set aside some money for charity, or give up a treat like chocolate, Lent is certainly a good opportunity to see how change can bring a fuller life.

As a benefice we are having a series of **Lent lunches** between now and Easter - each of the speakers has been chosen to help open our eyes to more of the fullness of life that Jesus promised. I am delighted with the prospect of each and every one of them and I hope you'll be similarly interested and come along. Everyone is welcome. Because we are a benefice the lunches will be in both Batheaston and Bathford and to keep us all on our toes they are on different days of the week!

See you there!

Lauretta

For up-to-date information, please visit our website [www.stswithunsbathford.co.uk](http://www.stswithunsbathford.co.uk)  
Rev'd Lauretta | [revlauretta@outlook.com](mailto:revlauretta@outlook.com) John Keelty | [churchwardenj@stswithunsbathford.co.uk](mailto:churchwardenj@stswithunsbathford.co.uk)  
Katherine Lush | [churchwardenk@stswithunsbathford.co.uk](mailto:churchwardenk@stswithunsbathford.co.uk)  
Church Office | Zoe Hill 01225 920050 [administrator@stswithunsbathford.co.uk](mailto:administrator@stswithunsbathford.co.uk)

## GET OUT AND ABOUT TO HELP OUT

There are a number of areas and projects around the Parish that require some attention, which could best be tackled by having volunteers who could be called upon when needed, most probably, but not exclusively, at weekends. The Parish Council would LOVE to compile a database of folk who we can draw upon individually or as a group, who we could assign various projects to, depending upon what is needed, and skills required.

We anticipate 90% will be outdoor tasks and would entail light work only, with refreshments provided. This is a great chance to get out, get some exercise and make new friends – and contribute to improving Bathford's community. It doesn't matter if you already volunteer in some other way, there's plenty to be done!

Contact [clerk@bathford.net](mailto:clerk@bathford.net) or ring 07767 383095



Every week throughout Lent. Meet at 12 noon for lunch (bring a picnic!)

Talks begin at 12:30

**Thursday 29 February | St Swithun's Eco Living with Ian MacKay**

**Wed 6 March | St Swithun's International Action – Mary's Meals**

**Wed 13 March | St John's Local Green Living – Share & Repair Shop**

**Wed 20 March | St John's Wellbeing and Good Living – Bath City Farm**

**Wed 27 March | St Swithun's Rural Action! – Jamie's Farm**

Bring your own picnic lunch and enjoy a warming cup of tea or coffee which will be served in Church.

## BATHFORD VILLAGE SHOP & CAFÉ

All about EGGS and some OEUF's!

**A primary goal of BEFA is to champion local businesses, fostering a sense of community support. Here, we spotlight two local suppliers with whom we have developed excellent partnerships.**

### NEW MCDONALD FARM EGGS

Holding a prominent place in our shop, New McDonald Farm supplies us with organic, free-range eggs, fed without soya. Many of you appreciate their quality, which comes at a friendly price compared to similar products.

### WARLEIGH FARM FREE RANGE EGGS

A long-standing favourite in our shop, Warleigh Farm's free-range eggs have graced our shelves for years. Despite facing challenges meeting demand last year, we are thrilled to announce an increase in their flock this season. Thanks to the addition of more hens, we can now fulfil your egg needs with ease.

### CHOCOLATE EGGS

Liz, our assistant manager, has been busy curating a delightful selection of Easter Eggs, including Mini Eggs, Caramel Eggs, Malteser Eggs, Lindor Milk Eggs, Ferrero Hazelnut Eggs, Lindt Hen Mini Eggs, and Peter Rabbit Dairy Milk Eggs. Hurry in before they're all gone — stock is limited!

### EXPANDING OUR QUALITY WINE STOCK

Listening to your feedback, we've added two white and two red wines to our regular stock and eagerly await your feedback. Come in and check them out.

### DON'T FORGET...

Mothering Sunday on **Sunday**

**10 March.** Visit the shop to browse through the variety of beautiful cards on display. And, BEFA are hosting a quiz night on **19 April** to raise funds for improvements to the Shop. It's always a popular event and tickets are sold in advance so pick your team name and book your table before it sells out! Details can be found below left.

Pancakes with a French Twist by The Twinning Association

Despite the absence of the usual schoolchildren during half-term holidays, our **Twinning Pancake Day event** saw a fantastic turnout. We extend our gratitude to all who came to support us, along with the wonderful volunteers from The Twinning Association.



**BEFA QUIZ NIGHT**  
Come and support Bathford Village Shop  
**Friday, 19 April 2024 7-10pm**  
Doors and cash bar open at 7pm  
Quiz starts at 7.30pm prompt  
Tickets must be bought in advance  
£12.50 per person inc. supper  
On sale 3rd April at VillageShop  
Tables of 6 maximum  
Buy 6 tickets at the same time to secure a full table - £75

Image by starline on Freepik



**BATHFORD ALLOTMENTS**  
Growing here since 1880

**GOT THE URGE TO GROW YOUR OWN FRUIT AND VEG AND ENJOY THE GREAT OUTDOORS?**

**Plots are now available to rent for 2024.**

Full Plot: £24p.a.  
Half or Quarter Plot: £12p.a.  
Water charge for all plot holders: £9p.a.

For details contact [clerk@bathford.net](mailto:clerk@bathford.net) or phone:  
Parish Council: **01225 858220**  
Warden Jo: **077681 56599**  
Warden Colin: **07899 973695**



**Easton Spice**  
Take some of the magic home with our delivery service!

Travellers' Choice 2020, Travellers' Choice 2021, Travellers' Choice 2022

Open 7 days a week from 5pm till 10pm  
Call - 01225858007 or order online  
[www.eastonspice.co.uk](http://www.eastonspice.co.uk)

**Loose covers and curtains**


individually made to suit your requirements  
ALSO repairs and renovations

**FREE ESTIMATES**

Sue Hocking  
**01225 865706**  
**07748 780985**


Email: [sue.hocking@talktalk.net](mailto:sue.hocking@talktalk.net)

We're the **Which? Insurance Brand of the Year** for the second year running



Whether it's for your car, home, farm or business, for quality insurance you can rely on, join us today.

Contact NFU Mutual Bath on **01761 239382**



The National Farmers Union Mutual Insurance Society Limited (No. 111982).



Foster mother with brood

## BATHFORD SOCIETY

Review of meeting on 29 January

**THE HISTORY OF LARKHALL:**  
Katherine Holden and June Hannan

**Larkhall has a bubbly community.** The adjective works because Larkhall's industries were to an extent based around its availability of water. In Bath, according to a mid-19th century census, there were 424 women in home laundry work, many of them in Larkhall and advertised in the local press. The RUH even set up its own laundry in Larkhall.

**Dead Mill**, still standing, was at various stages involved in fulling (part of the processing of woollen cloth) and threshing corn. The Lambridge Mill was connected with leather

dressings, glue making and flour production. Somebody tried to make beer, but it tasted awful, the reason being its high iron content. Not to be daunted, the water was used to set up Bladud Spa, and the bottled water was sold nationally.

**Bath was a pioneer in setting up children's homes, the aim being to keep children out of the Workhouse.** There were two in Larkhall, for boys and girls. The foster mothers had up to 21 children aged between 3 and 14 with no domestic help!

**Lambridge was bombed and one of our audience remembered walking up to Swainswick for safety.** It was a riveting talk and we learned so much more about our vibrant neighbour!

## ECOLOGICAL SURVEYS AROUND

**BATHFORD:** Felicity Husband

**Monday 25 March 2024 Bathford Parish Hall**

Last year, the Bathford Society programme included a talk on the maintenance of the 1840s Bathford Bridge which is rated as Grade II. Part of the Network Rail request for planning permission included an ecological survey of the area up to 1 Km from the bridge. We circulated it to the membership and it aroused so much interest, that we invited Ecus, the company that undertook the survey, to tell us how they went about it. They managed to identify 60 or so

birds, as well as noting otters and other animals and gave an extensive list of plants. In this talk, Felicity Husband, Ecus Associate Director, will tell us about the methodology and effort involved in a major survey of this kind, and will show us photographs of the more interesting species. Before the talk, members will be sent a link to the original report (also on the Bathford Society website). The talk will still be interesting even if you don't have time to look at the survey in advance!

**Coffee is available from 19:30. Visitors and new members are welcome. Admission £3 for non-members.**



# BATHFORD VILLAGE CLUB

a local gem with more to it than meets the eye!

### Chair of the Club, Lyn Derrick, tells us about the past, present and hopes and plans for the future.

The Village Club has been part of Bathford since 1945/6. It started out as the British Legion Club for ex-servicemen in a shed provided by the Ministry of Defence, on what is now our car park. The present building was constructed in 1964 to provide a better facility for local people and was built by local people, who put their tradesmen's skills to great use.

Not too dissimilar to BEFA and the Village Shop, the Club is a membership organisation and is run by a committee of local volunteers, who all give their time for free, to steer how it operates and what it offers. The building is owned by the Royal British Legion but is leased to the Village Club Committee and we aim to run it for the benefit of our community.

For many years, the Club had a large membership, which was unfortunately decimated through closure for two years during the pandemic. The Committee is working hard to raise the Club's profile and increase our membership and put the Club back at the heart of the community again. We are determined to see to it that everyone, especially newcomers get a warm welcome!

In 2023, we feared that we might face closure altogether, as a building survey showed the electrics needed to be upgraded to meet required standards. To our credit, we crowd funded and, together with a welcome contribution from the Parish Council, we raised well over the necessary six thousand pounds to complete the repairs.

We know there's a broad spectrum of ages and interests in the Parish to cater for and the Club hosts a wide range of entertainment and events including:

- Live entertainment at least twice a month with popular artistes
- Monthly Bingo which is always such a fun and sociable evening
- Jazz Jam Sessions every third Friday of the month which bring together a wealth of talented local musicians
- Regularly screening of major sporting events
- We have two mixed skittles teams who play in our skittle alley
- We host both the Bath Sailing Club for their programme of interesting talks as well as Tots to Teens Ballet classes

We would love to add a Pool Team, a Darts Team and host a Bridge Club if some enthusiasts stepped forward. Do get in touch if you are interested!

The Club has a full catering facility and hosts wedding receptions, parties and celebrations for all ages. **If there is a chef who wants to make use of the facilities, we would be delighted to discuss the opportunities.**

Along with our one paid member of staff, our Bar person, the Club's Committee always put themselves out to help with or host community events held on the Village Green. For example, we were delighted last year to jointly host

and cater for the Queen's Platinum Jubilee celebrations and the Teddy Bear's Tea Party and then to serve mulled wine and mince pies at the Christmas Carol evening in December. These events have been very well attended and raised valuable funds for charities along with the Club.

Importantly, we are pleased that the Club forms the focal point for the annual British Legion Remembrance Day Parade in November, which starts at the Club and continues to St. Swithun's Church for the service and wreath-laying at the war memorial. Every year the parade is escorted by the 'Cripples Club' – a posse of Bath-based motor bike riders who help make it an impressive sight.

We provide a great venue with drinks prices that are such good value. If you would like to join, it's only £23 for a year and for that you get a 10% discount on all your drinks and have a chance to be voted on to the committee and play a part in the running of the Club.

**Moving forward, whatever you'd like to see at the Club, come and put it on. We'd love to have more of you with us!**

Further information is available at [www.villageclubbathford.co.uk](http://www.villageclubbathford.co.uk) or to contact the club about an event, contact Emma Hughes, Club Secretary on 07588 966641 or by email at [thevillageclubbathford@gmail.com](mailto:thevillageclubbathford@gmail.com)

## What's On at the Club

Spring is in the air everywhere you look around and we spring into March with some fabulous dates for your diary.

### SATURDAY NIGHT LIVE ENTERTAINMENT – 20:30 ONWARDS

**Saturday 9 March | Trena-Marie** – an excellent female singer and a firm favourite at the Club – Trena last entertained us at our Jubilee celebrations

**Saturday 23 March | Play It Again Steve** – a great male guitar vocalist covering songs from all decades



### Bingo | Friday 15 March – 19:30

Always an excellent night – always entertaining – always winners – come and chance your luck - £5 for a book of 4 games and 2 flyers – 12 chances of winning

### JAZZFORD JAM Friday 22 March – 20:00

An evening of music from the local 'house band' with plenty of opportunity for any players or singers to join in. Please come and join us to play or listen.

### RUGBY UNION – SIX NATIONS

March sees the tournament continue and conclude, thank you for supporting with us so far - we will be opening and showing all England games and hopefully a few more.

**Saturday 9 March – England v Ireland – 16:45 kick off**

**Saturday 16 March – France v England – 20:00 kick off**

We hope to see as many of you as possible over the coming month – remember you don't have to be a member to use this local venue – all are made very welcome.



PRECISION  
PILATES STUDIO

PILATES  
REFORMER  
BARRE  
YOGA

Small class numbers  
Classes for all abilities  
One-to-one sessions  
Air ventilation system  
Free two-hour parking

[precisionpilatesstudio.co.uk](http://precisionpilatesstudio.co.uk)



## POTHOLES, BROKEN PAVING SLABS, BLOCKED DRAINS?

Did you know that you can report these problems and more, if they are related to streets, parks or greenspaces directly to B&NES via the website **Fix My Street?**

The web link is: [www.fixmystreet.com](http://www.fixmystreet.com)

Once there, you follow a series of questions which gives you the opportunity to report the issue:

- Enter a location - postcode or street name
- You will be shown a map and you need to click on the location of the problem
- Enter details of the problem. A photo is very useful and you should upload this
- Then you just need to confirm your report and it will go straight to the team in B&NES who will investigate.

It has been proven to be an efficient system and at the time of writing there had been 469 reports in the previous week and 1,070 that had been fixed in the previous month.

If you don't have access to the website, you could phone Council Connect on **01225 39 40 41** instead.



## SAFER ROADS THROUGH THE PARISH

Hopefully you were not one of the **2240 drivers that were reported to the Police having been caught driving well above the speed limit past either of the Parish Council's two Auto SpeedWatch devices during the pilot phase of their use!** They are positioned on the High Street and the Box Road. The highest speeds recorded were 57mph on the Box Road and a remarkable, 56mph on the High Street!

The devices complement the roadside speed monitoring sessions that local Community SpeedWatch volunteers undertake.

Registered owners of speeding vehicles are sent a letter from the Police, warning them of the dangers of speeding and that it is unacceptable.

The devices have helped build up a pattern of driver behaviour. On the Box Road, some vehicles have been reported multiple times – one as many as 18 times! The Police are currently undertaking a complete review of **Community SpeedWatch** and how to deal with prolific speeders is under consideration, as obviously warning letters aren't a good enough deterrent for some!

The Police will be consulting with the **Parish Council Highways Committee** on the continued use of the devices, to aid further evidence of excessive speeding problems and perhaps have specific targets, such as commercial vehicles or those driving at very high speeds etc.

**Both Community Speedwatch Teams on the Box Road and High Street would love your help.** Please contact: [clerk@bathford.net](mailto:clerk@bathford.net) to register your interest.

## WELCOME to the Parish

- Are you new to the Parish?
- Do you have a neighbour who has moved in recently?
- Are you a local group or organisation that wants to promote yourself to new residents?

Then you need to contact Pam at: [pampriston@googlemail.com](mailto:pampriston@googlemail.com)

Pam collates information of interest for new residents into a pack and delivers it to them as a gesture of welcome, to our community.

ODD JOB GUY

Reliable, experienced  
handy man service

Jobs in your home and garden  
No project too small  
My own van & tools

Clearance, furniture assembly, shelving, pruning,  
carpentry, landscaping, decorating and more

Contact Guy Collins:  
Tel. 07810 370950  
Email: [oddjobbath@gmail.com](mailto:oddjobbath@gmail.com)

For rates and more please visit

[www.oddjobguy.co.uk](http://www.oddjobguy.co.uk)



EXPERIENCED  
PERSONAL TRAINERS  
SPECIALISING  
IN FITNESS

**FOR THE  
OVER 60's**

**PETTEMERIDES**  
PERSONAL TRAINING

MOVE BETTER, FEEL BETTER . . .

*Expertise in exercise prescription for those with:*

Medical Conditions | Neurological Conditions | Lower Back Pain  
Hip and Knee Replacements (Pre & Post Op)

Personal Training  
Supervised Gym Sessions  
Physiotherapy  
Sports Massage



239 LONDON ROAD EAST,  
BATHEASTON, BATH, BA1 7RL  
t. 07779572761  
e. hpettemerides@ymail.com

## IN THE GARDEN

with Kevin Marris



### AND SUDDENLY, IT'S SPRING!

I said in last month's article that it would be here before you knew it. And just look at what was in flower in early February - just too many examples to put in the Bulletin. The most plentiful were the snowdrops, the most surprising were the tulips. I can take credit for the proliferation of the snowdrops because in the past I dug up some clumps and spread them around, and they have multiplied wonderfully. The tulips are an early variety, and although they're in pots, they have been outside all winter, so you can't accuse me of cheating. And as for the hellebores I'm sure they are interbreeding - I can't believe I spent that much on the different varieties that I now have. It's just a pity that I can't put all the pictures in the Bulletin.

By the time you read this article, it will indeed be spring - at least meteorological spring, which starts on 1 March. Then for the starry-eyed among you, there's astrological spring, which starts on 20 March. And now I've found another one - phenological spring, the timing of which depends on natural events, for example the flowering times of certain plants. So basically, spring comes whenever you fancy.

Now I would like to try to broaden the appeal of the scope of the article a bit. If you're not someone who 'does' gardening, you don't have to pick up a spade to enjoy it. Instead, just pick up a copy of the National Gardens Scheme's yellow book (or go on-line to the NGS) and look for a garden near you, or perhaps near someone you know, and make it a day out. Someone else does all the hard work; you can usually get teas, and it's all in aid of charities, both national and local.



## BATHEASTON GARDEN GROUP

'The Development of the Gardens at The Newt in Somerset': Stephen Herrington

19:30 on Wednesday 13 March  
at Bathford Parish Hall.

Stephen's career in horticulture includes working at RHS and National Trust gardens before taking up his current post of Head Gardener at The Newt in December 2020. Stephen will talk about the creation of the gardens at The Newt and recent developments including the newest element, The Four Seasons Garden.

Entrance to the talk is free to Batheaston Garden Group members. Non-members welcome, admission £5 (pay on the door, no need to book).

Batheaston Garden Group's programme of garden visits starts in April with a visit to

Kemble House near Cirencester highlighting tulips, followed in May by a visit to Church Farm, Wellow known for its meadow gardens. A coach trip to The Savill Garden, Windsor has been arranged for June. There are visits to Scots Farm, Malmesbury, Veddw House Garden near Chepstow and Batcombe House near Shepton Mallet before the autumn programme of talks commences in October.

Batheaston Garden Group welcomes members from all parts of Bath and the surrounding area. For information on this year's programme of talks and garden visits and on how to become a member, please visit

[www.batheastongardengroup.co.uk](http://www.batheastongardengroup.co.uk)





“  
**Wonderful care for my  
 dearest mum when she  
 needed it most. I cannot  
 give enough praise.**  
 - Christine, Bath

We have immediate capacity to support new customers. Call our friendly team today. Bluebird Care Bath & NE Somerset 01225 617322 bluebirdcare.co.uk/bath



# The Review!

by Judy Marris



Photos Mike Hendon

**Peter Pan - What a joyful evening!** The Bathford Players’ production of “Peter Pan the Panto” delivered everything you want from a pantomime. There was a clever set, excellent acting, energetic and well executed singing and dancing, a dame who gave us excruciating jokes and puns and, of course, a most villainous villain. And all was accompanied by live music and an audience ready to cheer, clap, sing and shout out as required.

The scene was set with a spirited sword fight between Hook and Peter Pan which resulted in Hook losing his hand and acquiring his hook. Vengeance was promised. After meeting Tiger Lily and her band of ‘Indigenous Neverlandian People’ we moved swiftly on to London. Here we saw the Darling family and Nana and the arrival of Peter Pan and Tinkerbell in their lives. That grumpy punky fairy was just wonderful.

Once we returned to Neverland we met the Lost Boys and the Pirates and the scene was set for Hook’s dastardly plot of revenge. The crocodile was fearsome, and Hook was duly eaten to everyone’s satisfaction.

But what made this so joyful was the full cast singing and dancing. Wendy and Tinkerbell

blossomed as the evening progressed even when faced by a difficult duet. Peter’s energy throughout was exceptional as was that of the cast from oldest to youngest. My highlight? They performed what is, for me, one of the hardest musical songs ‘You Can’t Stop the Beat’ from Hairspray TWICE. Fabulous!

**BATHFORD PLAYERS EGM**  
 The Bathford Players will be holding an EGM on **Monday 15 April 2024 - 18:00** in the Parish Hall Meeting Room. More information to follow in April’s Bulletin but please put the date in your diary!

**Avonvale RFC - Minis & Juniors**  
 Friday 8<sup>th</sup> March – Club Opens at 7.30pm

**QUIZ Night**

Everyone welcome. Cheese boards and raffle.  
 Teams of 6 per table at total cost of £45  
 Contact Nicola on 07989 850176

# BATHFORD PARISH COUNCIL

Notes from Council meeting 19 February

## STREET FURNITURE

There are over 30 benches sited around the Parish. The Council would like to assess which are commonly used by residents and which are not. We have reviewed the state of each bench and some need repair or just cleaning but we don't want to waste funds fixing benches that aren't used. Please let the Clerk know of any you use and/or think are in need of repair.

## DEFIBRILLATOR

Please note that there is a defibrillator for use on cardiac arrest patients, available in Bathford village, located outside the front entrance to the Village Shop.



To access the machine, dial 999, ask for Ambulance and request the code to open the cabinet. Please make a conscious note of its location - it may help save a life.

## MEADOW PARK PC CABINET

The Council is wondering if the cabinet in Meadow Park is used by residents for information on the Council and village events, or whether it's redundant, because it needs some repair. Perhaps it should be repositioned elsewhere in Meadow Park. **Your opinion is welcome.**



## BATHFORD SCHOOL QUIZ NIGHT

Get ready to quiz, giggle and gulp at our ultimate Bathford vs Batheaston School Quiz Night extravaganza on Friday 15 March from 19:00 at Batheaston new Village Hall. Gather your brainy bunch of 6 or fly solo for an evening packed with mind-boggling questions and hilarious moments. Whether you're a trivia titan or a quiz newbie, we've got a spot just for you! Secure your seat for a team of 6 (for £30) or venture solo (we will put you with others to make a table of 6!) – the more, the merrier!

**Hungry? Thirsty? No problem!** Pre-order food and drinks to keep your energy levels up as you conquer each round. Plus, we've got a bar serving up extra liquid courage for those tough questions!

Follow the link below to reserve your tickets before they vanish faster than the answers to our toughest riddles. **Don't miss out on the fun – see you there.**

[www.pta-events.co.uk/batheaston](http://www.pta-events.co.uk/batheaston)

## ANNUAL PARISH MEETING - SAVE THE DATE

This year's meeting will be held on **Tuesday 14 May at Bathford School Hall at 19:00.** The Parish Council is accountable to all our residents and this meeting is your opportunity to address the Council on local matters. We will have a selection of speakers on a diversity of local matters. Refreshments will be served.

## NEXT COUNCIL MEETING

Monday 18 March 19:00 Bathford School

Residents are welcome to attend and raise matters with the Council in the first ten minutes. Contact: [clerk@bathford.net](mailto:clerk@bathford.net) Tel. 01225 858220

DATE	TIME	DETAILS	VENUE
Sun 3 Mar	10:00	Service of Holy Communion	St. Swithun's Church
Sun 3 Mar	17:30	Re:Connect - For Year 7 pupils get-together: table tennis, games, discussion, prayers and refreshments	St. Swithun's Church
Weds 6 Mar	11:20- 12:05	Mobile Library	Dovers Park by Bathford School
Weds 6 Mar	12:00	Lunchtime Lent Talk: 'International Action', Mary's Meals	St. Swithun's Church
Fri 8 Mar	19:30	Quiz Night	Avonvale Rugby Club
Sat 9 Mar	16:45	6 Nations Rugby – England vs Ireland	Village Club
Sat 9 Mar	20:30	Trena Marie – Female vocalist and entertainer	Village Club
Sun 10 Mar		<b>M O T H E R I N G S U N D A Y</b>	
Sun 10 Mar	10:00	Contemporary Service	St. Swithun's Church
Mon 11 Mar	20:00	Bath Sailing Club Talk - 'From Jutland to the Jetty at Portsmouth – A Centenary of RN Aircraft Carriers & Naval Air Power'	Village Club
Weds 13 Mar	12:00	Lunchtime Lent Talk: Local Green Living - Share & Repair Shop	St. John's Church Batheaston
Weds 13 Mar	19:30	Batheaston Garden Group - 'The Gardens at The Newt in Somerset'	Village Club
Fri 15 Mar	19:00	Bathford/Batheaston School Quiz Night	Batheaston Village Hall
Fri 15 Mar	19:30	Bingo	Village Club
Sat 16 Mar	20:00	6 Nations Rugby – France vs England	Village Club
Sun 17 Mar	10:00	Service of Holy Communion	St. Swithun's Church
Mon 18 Mar	19:00	Parish Council Meeting	Bathford School
Weds 20 Mar	11:20-12:05	Mobile Library	Dovers Park by Bathford School
Weds 20 Mar	12:00	Lunchtime Lent Talk: 'Wellbeing and Good Living' - Bath City Farm	St. John's Church Batheaston
Fri 22 Mar	20:00	Jazzford Jam Music Night	Village Club
Sat 23 Mar	20:30	Play It Again Steve – Male guitar vocalist	Village Club
Sun 24 Mar	10:00	Palm Sunday - Joint Service of Holy Communion	St. Swithun's Church
Mon 25 Mar	14:00	Film Club – 'Military Wives'	St. Swithun's Church
Mon 25 Mar	19:30	Bathford Society; 'Ecological Surveys Around Bathford' - Felicity Husband	Village Club
Mon 25 Mar	19:30	Evening Prayer	St. Swithun's Church
Weds 27 Mar	12:00	Lunchtime Lent Talk: 'Rural Action', Jamie's Farm	St. Swithun's Church
Thurs 28 Mar	19:30	Maundy Thursday - Holy Communion, with hand and foot washing	St. Swithun's Church
Fri 29 Mar	10:00	Good Friday - Children's Activity, Making an Easter Garden	St. Swithun's Church
Sun 31 Mar	10:00	Service of Holy Communion	St. Swithun's Church

## SAVE THE DATES

Mon 15 Apr	18:00	Bathford Players EGM	Parish Hall
Fri 19 Apr	19:00	BEFA Quiz Night	Parish Hall
Fri 26 Apr	19:30	Ceilidh - Bathford Events	Bathford School Hall
Tues 14 May	19:00	Annual Parish Meeting	Bathford School

The Bathford Bulletin and Bathford Parish Council cannot accept responsibility for the goods and services advertised.

whiteley helyar

dedicated residential estate agents



Successfully selling  
property in Bathford  
for over 40 years

6 Princes Buildings, Bath, BA1 2ED | 01225 44 75 44  
rupert@whiteleyhelyar.co.uk | [www.whiteleyhelyar.co.uk](http://www.whiteleyhelyar.co.uk)