

JULY 2024

The Bathford Bulletin

For the residents of Bathford, Shockerwick and Warleigh

Bathford Flower Show

Not just
a flower
show!

Bathford School Hall

Saturday 7 September 2024

14:30 - 16.30

It's time to prepare for this
wonderful event!

DETAILS ON PAGE 13

www.bathford.net

Empowering support from Bath and NE Somerset's only CQC Outstanding home and live-in care service.
Bluebird Care Bath & NE Somerset
01225 617322
bluebirdcare.co.uk/bath



“The care and professionalism my parents received from their Bluebirds was second to none.

- Mrs W, Bath

Inspected and rated

Outstanding ☆



The Editorial Team

Hillary Carr - Editor & Advertising
Maureen Breeze - Editor
Helen Keelty - Editorial
Kath Shayler - Creative
Sarah Appleton - Publishing
Adrian Raybould - Editorial

We welcome all articles, images and notifications of births, deaths and marriages. Please email for contributors guidelines:

bathfordbulletin@gmail.com

The Bathford Bulletin needs you!!

Fancy having a go at writing articles for the Bulletin? Interested in joining the Editorial Team?

Can you use InDesign and have some spare time to help with the formatting?

You would be most welcome!

Email bathfordbulletin@gmail.com if you are interested or would like to know more.

September issue copy deadline

Contributions and advertisements are welcome, up to but no later than **15 August** via:

bathfordbulletin@gmail.com

The Bathford Bulletin is produced and delivered free to all homes in the Parish, 10 months a year on an entirely voluntary basis.

Printed by

Corsham Print on paper from sustainable resources, using bio-degradable inks and low energy production.

www.corshamprint.co.uk

WELCOME

to our JULY/AUGUST issue

Here comes summer... and hopefully sun, fun, sea, sand... and a superb summer break.

It was good to see Bathford make a concerted effort to mark the **80th Anniversary of D-Day** through Simon Browne's excellent presentation of the events during the invasion, and to share it with our own **WWII veteran Tom Dyer, aged 98 (see p.15)**. On the Saturday, the Village Green along with the **Village Club**, became the venue for an excellent afternoon's celebration for all ages to mark the occasion (see p.5).

Our dear friends from Artannes-sur-Indre, our twinned French village will be visiting Bathford in July. As ever, there is a **full programme of activities** to be enjoyed and you're all invited to join the Picnic (see p.9).

Get your teams together just one more time before the summer break to show off your cerebral prowess at the **Village Club Quiz night** on **12 July (see p.18)**.

Pray to the Weather Gods that we can enjoy a fine day on **14 July** for the Events team's '**Trash to Treasure**' day. A great way to offload your unwanted or unused goods that someone else may value (see p.9).

Summer celebrations continue throughout July and August...

At the **Village Shop Café**, it's the return of the monthly lunch buffet in July and August sees the return of the Summer Supper (see pp.6/7).

Meanwhile, on the streets, the **Events Team** has compiled a **Treasure Trail** for all ages to enjoy this summer. Have fun seeking out and identifying the landmarks and sights in the village and get to know Bathford more intimately (see p.16).

And don't forget – the **Bathford Flower Show** returns on **7 September**. Get started on your entries now; we can't wait to see your efforts!

Whatever you do, wherever you go, have a very enjoyable summer and don't forget to pack your sunscreen! The Bulletin takes a month off in August. See you all in September!

Editorial Team

We're the **Which? Insurance Brand of the Year** for the second year running



Whether it's for your car, home, farm or business, for quality insurance you can rely on, join us today.

Contact NFU Mutual Bath on **01761 239382**



The National Farmers Union Mutual Insurance Society Limited (No. 111982).

Take some of the magic home with our delivery service!

Travellers' Choice 2020 Travellers' Choice 2021 Travellers' Choice 2022

Open 7 days a week from 5pm till 10pm
Call - 01225858007 or order online
www.eastonspice.co.uk

NEW MACDONALD'S FARM

Regenerative Farming

THE MAC SHACK FARM SHOP

open 7 days a week (inc. holidays) from 8am - 8pm
selling the freshest pasture free-range organic eggs, raw cold filtered honey, organic dairy, freshly baked sour doughs (Tues & Fri), meats, jams and more.

THE OLD CHICKEN SHED CAFÉ

open Sundays 10am - 4pm
selling tea & coffees, cakes, toasties and bacon & egg rolls!

Closes Farm, Kingsdown SN13 8DG
01225 519820

Loose covers and curtains

Individually made to suit your requirements

FREE ESTIMATES

Sue Hocking
01225 865706
07748 780985

Email: sue.hocking@talktalk.net



We continue into July and August with lots more happening – please see below and keep your eyes on our Facebook page.

SATURDAY NIGHT LIVE ENTERTAINMENT

13 July | 'Our Kid' – a brother duo covering a wide range of music from across the eras

27 July | 'Sharon Stanton' – a highly recommended female vocalist who is new to the Club

10 August | 'Chris Rainbow' – a returning act – a great guitar vocalist

24 August | Male & Female Duo – new to the club but come highly recommended

Bathford Commemorates the 80th Anniversary of D-Day

On **8 June, 2024**, the residents of Bathford and surrounding villages came together in a community event to commemorate the **80th anniversary of the D-Day landings**. The event was a poignant reminder of the courage and sacrifice of the Allied Forces during World War II. This commemoration event was a real testament to our village's deep respect for the past and our commitment to remembering the sacrifices made for our freedom, ensuring that the legacy of D-Day will live on.

A great time was had by all who came – the weather was on our side! We enjoyed a BBQ, some great music, children's games, and even a Guess the Name of the Tommy competition.

A special 'Thank You' to all those who made the day what it was.

To **'Just Frank'**, for providing the excellent 'war-time' musical entertainment, and for getting the dancers up and boogieing!

To artist **Oley**, for painting lots of faces and keeping many children engaged and enthralled!

To **Richard Lucas** for offering his own original copy of the Telegraph from 7 June 1944, which first announced the D-Day launch. Richard kindly arranged for a printing firm to scan and print some large copies, and to **Simon Anderson** of **DA Archives Solutions**, for printing them at short notice.

JAZZFORD JAM

26 July and **23 August** – these evenings are so popular with some fantastic live music being played by some wonderful artists – come and witness for yourself just how beautifully played the music is.

BINGO

Please keep your eyes on our Facebook page for details of dates for the Bingo in July and August – due to holidays we are unable to commit to a date at the moment, but rest assured it will take place.

EUROS 2024

Again, please keep your eyes on our Facebook page for details of when we will be open and which matches we will be showing – we will certainly be showing all England games.

The Club loves welcoming you all and we hope you find us warm and friendly. *See you soon.*

To **Kath** for knitting our lovely Tommies! We had grown rather attached to them! But we hope Captain Eli, Petty Officer Emmanuel, and Sergeant Seth enjoy their new homes.



To **Heather** of the **Bathford Events Committee**, the **volunteers** of the **Bathford Branch** of the **RBL** and the **Village Club**, for dedicating so much time over the past few weeks to make sure the event went off without a hitch!

And to our wonderful community, for helping to decorate the Village Green, for turning up in their droves, for donating raffle gifts, then buying umpteen raffle tickets, for playing children's games, for coming together in song and laughter, and to thank and remember those that made the ultimate sacrifice, so that we are able to spend moments like this, together.



BATHFORD VILLAGE SHOP & CAFÉ

18 years of Community Spirit and Quality Products

LUNCH BUFFET AT THE VILLAGE CAFÉ



New Initiative to Serve the Community

Bathford Village Shop and Café has long been a cornerstone of our community, providing essential goods with warm smiles, and a gathering place for residents. **BEFA**, as a co-operative, has a mission to serve and strengthen our local community, and we are excited to announce a new initiative designed to bring us all even closer together in a different way.

Starting Tuesday 30 July, we will be launching a pilot run of a **monthly Lunch Buffet**. This event will take place every last Tuesday of the month at the café, offering a delightful array of dishes prepared with love and the freshest ingredients. Our goal is not just to fill your bellies, but to create a platform where friends and neighbours can just come together, share a meal, have an excuse to get out of the house and be with people, break that routine of eating in front of the TV on your own and just come and enjoy some good food and company.

WHY A LUNCH BUFFET?

Community Engagement: We want to provide more opportunities for the residents of Bathford to connect and engage with each other.

Support Local: By participating, you support your local co-operative, ensuring that Bathford Village Shop and Café can continue to thrive and serve you.

Feedback and Improvement: Your feedback is invaluable. By trying out our buffet and sharing your thoughts, you help us tailor our offerings to better meet the needs and preferences of our community.

EVENT DETAILS

Date: Every last Tuesday of the month, starting 30 July

Time: 12:30 to 3:30

Location: Bathford Village Shop and Café

Menu: Three-course meal in buffet setting

Cost: £8.50-£10 per head

Booking in advance is appreciated

We invite you to come, on your own or with a friend; it's open to all, enjoy the food, and let us know what you think. Your feedback will be crucial as we refine our buffet to best serve our community's needs. We look forward to seeing you there and sharing a wonderful meal together.

Come and support us, try it out, and help us get good at meeting your needs. Together, we can get more out of the Shop that we own!



FUNDRAISING BBQ

for the Village Shop

This year's **summer fundraiser** will be a **BBQ** at the Shop. Arrival drink, 3 courses and wine all for **£30 per head**.

Due to the significant demand for these limited tickets and not being able to sell them at a time that suits all, we have decided to do something different. There will be **2 ways** of obtaining them.

Send the **names of all guests (maximum 4 per request)** and a contact email or telephone number, either by email to **annaechip@hotmail.com** or written down in a note and put in the box provided in the Shop. **Closing date** for this process is **Sunday 7 July** giving you plenty of time to submit your request. We will then **randomly pick** out of a hat on **Monday 8 July**, until we have **20 places taken**. You will be contacted if you have been successful and to sort out payment. We feel this way everyone has an equal opportunity to obtain tickets.

Also, if you have anything that we could use as a **raffle prize** then please let Anna know or bring into the Shop from **1 July**. Thank you again for all your support. **Anna, Rosie and Sue**



Fundraising BBQ
for the Village Shop
Friday 2 August

18:30 at The Bathford Village Shop Café

Join us to enjoy a BBQ and hopefully alfresco dining.

£30 per head. Arrival drink, food and wine.

Limited Places

For tickets, please email annaechip@hotmail.com or drop your request into the village shop.

Allocation of tickets will be by ballot.

Maximum 4 per request. Single entries welcome.

Closing date for ticket request Sunday 7 July

Film Club

St Swithun's Bathford Film Club screening for July is **'Wicked Little Letters'**, a newly released film based on a true story. In 1920s Littlehampton, two residents - Edith (Olivia Coleman) and Rose (Jessie Buckley) as well as other residents, begin to receive anonymous wicked letters. Rose is blamed but when the town's police officer investigates all is not how it seems. Lots of laughter on the way, also starring Timothy Spall. Do come along on **Monday 22 July at 14:00** in St Swithun's Church to enjoy this brand-new film with complimentary tea and cake after the film. (Suggested donation £3). Everyone welcome. Any questions phone **Ann Wade 07766 554749**.



NB There is no film club in August.



THE BIRD

BATH

GARDEN TERRACE

Bath's ultimate alfresco dining hideaway

thebirdbath.co.uk | 01225 580438 | @thebirdbath_ reservations@thebirdbath.co.uk

TRASH TO TREASURE

A **Trash to Treasure** event will take place on **Sunday 14 July** between **11:00 – 17:00**. It will give you the opportunity to search your cupboards for items that you no longer want but which your neighbours may find a use for. Put any unwanted items on your doorstep or at your gate and they will be understood to be free for the taking.

Landfill sites are a depressing reminder of the real impact of 'peak stuff.' A visit to our local recycling centre on the Midland Road reveals that many things are thrown away that still have some life in them and could be reused. Once they have landed in the skip however, it is too late, and they can't be rescued (I have been told off for trying!). The Council does have a sale room in **Keynsham** where some items that are in good shape have been retrieved and can be purchased but I fear that this does not make much of a dent in the total going to landfill.

The good news is that BANES Council does comparatively well in dealing with household waste and is listed in the **top 20 of over 300 UK councils surveyed in 2022-23**.

BANES managed to reuse, recycle, compost or send for energy recovery around **96%** of the total annual household waste.

However, this does leave approximately 4% for which there is no solution but landfill.

Your **Village Events Team** would like to stem the flow of discarded items upstream and ensure that everything that can be reused or repurposed (an art project perhaps?) gets a second chance.

In addition to all the lovely free stuff around the village, there will be bargain books available on the green in Dovers Park. You can choose from hundreds of paperbacks and hardbacks, with donations to the charity **Hope and Homes for Children**. Come along and browse. Anything not taken may sadly have to find its way to your bin but at least you will have tried...

Gillian Beber



TWINNING VISIT FROM ARTANNES

A full programme is planned for the visitors from Artannes our Twin village, when they are here between 6-10 July, staying in the homes of Bathford residents. As well as Bath and a visit to **Beckford's Tower**, a trip to **Cheddar and Wells** and a visit to the **Concorde Museum** in Filton are in the programme. Guests will be challenged to a game of croquet in the garden of Paul and Moyra Marshall on Court Lane and weather permitting, we will have a picnic lunch in the grounds of **Shockerwick House** on **Sunday 7 July**.

Anyone interested in joining in with the picnic and being part of the fun, will be most welcome. For details and to help us keep track of the limited numbers, please call **01225 852444**.

If you see any of the visitors around the village, perhaps give them a welcome smile and say "Bonjour"!

Maureen Breeze
Chair Bathford
Twinning Association



TIER BIKES

E-Bikes and E-Scooters Consultation

BANES is looking to extend the e-scooter and e-bike scheme out to Bathford. The Parish Council would welcome your interest, comments and opinions about introducing the scheme to the Parish. Please feel free to submit your comments in writing to **The Clerk c/o 54, Bathford Hill, Bathford BA1 7SN** or via email at clerk@bathford.net

There are currently 400 e-scooters and around 200 e-bikes in Bath; all are capable of managing the hills around us. E-scooters are available on a "Hop On-Hop Off" scheme in the city centre and there is a monthly hire scheme. To be launched this year are two e-cargo bikes for the Bath area, locations to be London Road and Kingsmead Square. You need a driving licence to register for the e-scooters but not for the e-bikes. They are all insured by the operator and have speed limiters. It is 99p to unlock a scooter or bike, and 16p a minute for the duration of the hire.

For more information on the scheme as a whole, go to: <https://www.westofengland-ca.gov.uk/what-we-do/transport/future-transport-zone/public-e-scooters-trial/>



Image courtesy of Tier Mobility



Technical help needed for Bathford Players

Do you have any expertise in **rigging stage lighting** or know of someone who does?

Bathford Players need such a person to rig, derig and set the lighting cues for our pantomimes in the future. The person who's given up their time so generously to help us in the past, will no longer be able to due to work commitments.

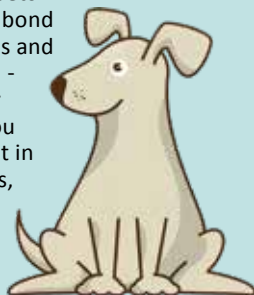
The pantomimes always take place in the February half term holiday in Bathford Parish Hall, so help is desperately needed if we are to go ahead with a production in February 2025. We do have a production in the pipeline but really need to fill this crucial role first.

If you think you can help or would like to find out more, please email helenbevan@live.co.uk

Helen Bevan

PET TALES

We want to write an article about people and their pets for a future edition. The bond between our furry friends and their owners is immense - some even look like their beloved owners! So, if you would like to see your pet in print, send in your stories, favourite dog walks, anecdotes and photos to bathfordbulletin@gmail.com



FROM ST SWITHUN'S

Dear Friends

Summer is here (sort of!) and with it comes our **new curate Jane Hoe**. A curate is like an apprentice vicar – she will be working across the benefice, in the villages of **Batheaston** and **St Catherine** and **Bathford** and she will be living in Bathford Vicarage. By the time you read this she will have moved in!



Jane is really looking forward to coming to live in the benefice and working in both churches; at first, she will be with me, learning what being a vicar looks like in our lovely villages. I absolutely love my job here so it will be a pleasure to train her, and I know you will do all you can to help her to feel at home. Please remember that she is an apprentice and so won't necessarily know the answer to your queries... expect her to say *'that's a question for the Vicar'* quite a lot at first!

As Jane arrives, our **Archdeacon Adrian** (roughly equivalent to my line manager) has left. We said goodbye to him at a service last week when all the **churchwardens** of the Bath area were ushered in for another year. Thanks so much to **John Keelty** who is our warden for this coming year – do chat to him if you might be interested in following in his footsteps.

Thanks very much to everyone who participated in the recent **churchyard strimming**. The next date is **Saturday 13 July** – see you there!

I do hope the summer brings lots of sunny days, and safe travels if you're going away.

With every blessing,

Rev. Lauretta

For up-to-date information, please visit our website www.stswithunsbathford.co.uk
Rev'd Lauretta | revlauretta@outlook.com John Keelty | churchwardenj@stswithunsbathford.co.uk
Katherine Lush | churchwardenk@stswithunsbathford.co.uk
Church Office | Zoe Hill **01225 920050** administrator@stswithunsbathford.co.uk

Sunday Afternoon Concerts

Following the successful charity fundraising this spring and summer, there are plans afoot to continue this effort through monthly afternoon concerts at St Swithun's, followed by afternoon teas.

The first one will be on the **29 September** and will feature local musicians - more details will follow in the September Bulletin.

Do you play an instrument or sing? Are you part of a music ensemble or know someone who is? Please take this opportunity to be a part of this inaugural concert – or a concert in the future. We would be delighted to hear from you.

Call: 01225 852444

Maureen & Nick Breeze

AROUND THE GARDEN

with Kevin Marris

BATHFORD FLOWER SHOW

Saturday 7 September 2024



As I write this, we're in the run up to a general election, and I'm perfectly happy with that, because the garden is one place where I can get away from all the fuss, the hype, and the palaver. And anyway, haven't we heard it all before? It's like a stuck record (if you can remember what vinyl is).

But, having said that, there is a little something that pleased me as a teenager, but now truly delights me as an old amateur gardener, that has just a touch of a socio-political undertone. It's a song by Flanders and Swann about two plants, a Honeysuckle and a Bindweed, who met, touched tendrils, smiled . . . and fell in love! It's called Misalliance and can be found on YouTube - listen to it, and the message in the final line will show you what I mean.



Anyway, more important than politics is what's happening in the garden which was at its best a couple of weeks ago when the Forget-me-not was dominating the edge of the borders, a riot of blue setting off flowers and foliage all over the garden. And you will have heard this from me before – they're for free! When I pull out the old plants,

I give them a good shake, letting the seed fall and, hey presto, a wonderful display appears next year. I only wish sowing my vegetable seeds could be as successful.

I now have a different robin watching my every move. I know it's different because the last one had a little white fleck on the side of its head, whereas this one has a way of ruffling its feathers just not quite perfectly. He hops around picking up things that I can't see until they're in his beak, and I keep very still until he's finished pecking away which sometimes takes a few minutes. Who needs tea-breaks?



Another bird story involves a family of blackbirds that likes to teach their young how to get into my fruit cage, where the gooseberries are just beginning to ripen. But there was an enormous kerfuffle involving jackdaws and blackbirds, and as I went to admonish them all it became obvious that it was a bit sinister. I eventually spotted one of the blackbird fledglings cowering inside the cage, more afraid of the jackdaws than of me. Should I let the jackdaws have it and save some of my gooseberries or let it go home to mummy and daddy?

Dear reader – I let it go.

You must have heard about the wonderful Flower Show, no matter how long you have lived in the village. And you do realise, of course, that it's not just flowers.

But, unlike many other competitive events, this show IS for the faint-hearted. You don't need any serious skills to be able to take part, because what you have around you at home and in the garden will provide the basis for an entry. And if you don't want to enter, you can come just to have a look at everybody else's entries. And then you'll get a pang of regret when you realise "I could have done that".

Where is it?

It's in Bathford School Hall

And when is it?

On the first Saturday in September.

So that's?

Saturday 7 September 2024.

And if I want to enter?

Go to the Village Shop in August

Get a copy of the Schedule with all the categories and decide what you can do.

See? Easy.

Then you bring your entry form,



which is in the schedule, to the Parish Hall (not the School Hall), on the Wednesday before the show – that's the 4 September, between 17:00 and 19:30. Pay your entry fee – 25p per entry and that's it.

You set up your entry early on Saturday morning, then you come back at 14:30 to see how you've done. And then treat yourself to some celebratory (or even commiseratory?) tea and cakes on the veranda.

Anybody can come and enjoy the show - we open at 14.30 and go on until 16:30. Have a look at the entries, meet friends, and have tea and cake on the veranda.

And if you're impressed, and even if you're not, please remember that it's a show produced by volunteers, and we could always use some more help. So have a chat with any of the committee – we'd love to hear from you.

If you can help, please get in touch with either Kevin: kevinmarris@hotmail.com or Caroline: carolineholden2013@gmail.com



Image courtesy of freepik

BathLife AWARDS 2024

AUCTIONEUM
FINE ART AUCTIONEERS & VALUERS

NOW ACCEPTING CONSIGNMENTS

TWO DAY FINE ART & ANTIQUES
22ND AUGUST

BOOKS AND WORKS ON PAPER
29TH AUGUST

Whether you're an auction novice or a seasoned trader, we'd love to welcome you through our doors!

- Prompt and free home visits and appraisals
- Full collection service available
- Probate services - comprehensive and total house clearance work undertaken
- Global market exposure - every lot published at auctioneum.co.uk and saleroom.com
- Superior quality fully illustrated online catalogues

AUCTIONEUM OF BATH
Tel: 01225 251303
Broadlands Farm, Box Road, Bathford, BA1 7JR
info@auctioneum.co.uk

AUCTIONEUM OF BRISTOL
Tel: 0117 967 1000
1 Harham Business Park, Memorial Road, Harham, Bristol, BS15 3JE
www.auctioneum.co.uk



SIOBHAN SLADE
PERSONAL TRAINING



Specialising in exercise for over-40s to noughties!

Do you feel...?

- Stiff or achy
- Lacking strength
- Easily tired
- Less steady on your feet
- Just want to feel fitter & healthier

I can help you **IMPROVE** your **MOBILITY, STRENGTH & BALANCE** with tailored exercises in your own home

Qualified to work with conditions including moderate: diabetes, arthritis, osteoporosis, high blood pressure, anxiety/depression, back pain & joint replacements*

Contact me for a **FREE** initial consultation
07789 035902 / siobhan.slade@outlook.com

*EXCLUDING heart, stroke and neurological conditions

L P Property Developments



Property maintenance, renovation and improvement

Over 20 years experience of all aspects of property maintenance, renovation and improvements

Period property specialist

Andy Perkins
07840 145029 01225 743319
www.lawrence-perkins.co.uk



TOM DYER – WWII VETERAN OF BATHFORD

We were delighted and honoured to have Tom

Dyer attend the presentation at the Village Club British Legion marking the 80th anniversary of D-Day.

Tom was born in London in September 1925; he was evacuated at the beginning of WWII, but after a few months returned to be with his parents, often using tube stations for sleeping during the Blitz.

Briefly an office runner, Tom joined the Post Office as a telegraph boy, delivering telegrams to the likes of H G Wells. He enlisted in the Air Training Corps with dreams of becoming a RAF navigator but a Harley Street doctor told him "Sorry old boy no flying for you", so he trained as a wireless operator on a mobile radar unit. His morse code training was near Bath where he met his wife Vera. In October 1944, his unit deployed to Venlo in the Netherlands, on the border with Germany, where they were

billeted in an abandoned school, unaware of the Battle of the Bulge being fought so close to them.

In April 1945, the unit moved into Germany crossing the Rhine at Cologne and then onto Hanover.

With the war ending, they were then sent to North Denmark to set up a navigational beacon to aid military traffic to the Far East. Almost mistaken for Germans but saved by the RAF roundel, the Danish villagers welcomed them with a party in their village hall.

Tom was one of four in his unit to be guests of General de Gaulle in Paris for the French celebrations.

Before he was demobbed, Tom served in the Middle East, travelling through Egypt to RAF Shaibah near Basra.

Tom worked on the counter in the main Post Office in Bath till he retired. He now lives in Garstons with his daughter Rosemary.

Rosemary Dyer



She's Electric is a female-founded business helping women who want to think bigger about sustainability and curious to know more about making the switch to driving electric.

Bringing together female-led sustainable brands in fashion, beauty and wellness, as well as hosting an expert panel. There will be electric cars to experience, and they'll provide a bite to eat and drink. It's a great opportunity to enjoy some guilt-free 'me time' in great company and make a real difference too.

Guests can attend either a morning or afternoon session and will be greeted by refreshments on arrival.

Please note this is a ticketed event only and spaces are limited. At the time of publication, Priority tickets are on sale at half price for a limited period.

www.sheselectric.co.uk



Image courtesy of freepix

TREASURE TRAILS Eye-spy Bathford Family Photo Trail

A chance to see and know more of **Bathford** by walking the village and keeping the children occupied during the summer holidays. The **walking photo trail** will be confined to the main part of the village and visible from the road or footpath. The **trail booklet** will be available from **The Village Shop** for **£2 a copy** at the end of **July**, to be returned by **early September**.

Be prepared to look up, down and in the middle, and be careful not to share your answers as there are prizes to be won!

Example:

The weather vane on the Village Shop.



BATH ROTARY FESTIVAL of MOTORING



A Great Day Out!

We won a family ticket to attend the **Festival of Motoring**, in May's Bulletin and took our grandchildren with us.

It was a really enjoyable family event. The sun shone, the festival was very well organised and the number, and range of cars was amazing. The grandchildren were a bit young to appreciate the cars, but they enjoyed the flying Doctor bike on display and the music from the live bands.

Thanks to the Bulletin for the tickets and the Rotary Club for a super show.

Mike & Sue Costello



Images courtesy of Maureen Breeze and Mike Costello



What a great result!

A big thank you to everyone who came to the **St Swithun's Charity Quiz Night** in June. It was a most successful evening, and you will be delighted to know that an amazing **£1,015** was raised for **Dorothy House** and **Mary's Meals**. Many thanks to those local businesses who donated so generously to the Raffle - **The Village Shop, Portals International, Cumberwell Golf Course, Steve Marriott, Robbie's Plaice** and **Bathford Nurseries**.



Congratulations to Daisy and Shane Lloyd who were married at St. Swithun's on 22 June and celebrated with friends and family at The Crown.

Bathford Events Presents...

Trash to Treasure

Sunday July 14th
11:00 - 17:00

Put items you don't use anymore on your doorstep or collect items from others' Books are also for sale in aid of Hope and Homes for Children All uncollected items must be taken back in at the end of the day

Bathford Events Group

QUIZ NIGHT

FRIDAY
12TH JULY
VILLAGE CLUB

7.30pm - £8 per person

Tickets:
<https://bathfordevents.sumupstore.com/>
or in The Village Shop

Teams of up to 6 members or come and join a team

Snack food to be served and raffle

AVONVALE R.F.C.

Embracing Community and Passion



Avonvale RFC's 2023/24 Season Recap

The 2023/24 rugby season was marked by relentless rain, turning our bottom field into an impromptu pond. With snorkels and flippers not RFU-approved, we shifted our home games to the upper pitch next to the park. This move transformed our matches into vibrant community events, drawing villagers to watch and later join us at the club for lively post-match discussions.

Next season brings an exciting change: **our Senior team will compete in a new league** with away games in nearby locations like Bradford, Trowbridge and Frome. This reduced travel means more opportunities for our loyal supporters to join us on the road.

We continue to be thankful to our sponsors and are delighted to have **Camella estate agents** supporting us alongside **Crossman Homes** who have aided us for several seasons.

We warmly welcome players of all abilities across all age groups. Our senior team will be training throughout summer. **The Minis/Junior sides kick off on Sunday 1 September, at 10:00.** We are bolstering our coaching team, and we welcome any new children eager to try rugby. Please spread the word that newcomers are always welcome.

We also welcome social members who want to integrate more into our community. Our club facilities are available to host a variety of activities, including yoga classes, charity events and birthday parties.

To join Avonvale RFC as a player, social member or if you want to use our facilities, **contact us through our Facebook page or our website, www.AvonvaleRFC.co.uk** - the best place to stay updated on club events, matches, and big-screen sports.

We are excited about the future and invite you to be a part of it. Join us at Avonvale RFC, where every member contributes to our vibrant and supportive rugby family.

Graham Chignell



Our Minis and Juniors section continues to thrive, with 120-130 children participating every season. Most of our young players hail from Bathford and surrounding areas. Sunday mornings have reclaimed their pre-COVID vibrancy, as parents gather inside and outside the club, enjoying the sight of their children engaging in fun-filled training sessions or spirited matches.

'HOME FROM HOME?'

by Trevor Johnson

From time to time, we showcase local writers. Here are some satirical reflections of life staying in hotels on his travels by Trevor Johnson.

Why aren't hotels designed for the benefit of the guests rather than the convenience of the staff, or the architectural awards?

You and your suitcase don't fit together into one of the segments of the revolving, entrance door. The hovering porter kindly takes your luggage through the side door, earning him (or her to be PC) a tip when your bags, eventually, arrive in your room.

At the check-in you drum your fingers as the receptionist's fingers flit over the keyboard - what is all that typing about?

With a squeeze, the lift is just about big enough for one person and a small suitcase. You carefully search the signs for your exact room number. Your 612 might not be two doors down the corridor from 610. It could be in the opposite direction.

You try all the possible combinations of direction and speed of insertion and withdrawal with the piece of plastic, but no green light. The fixed-smile receptionist asks: "Are you sure you put it in the right way, Sir?"

As you explore your 'home' for the night, the cloud of déjà vu descends:

- the double bed that is not a double, and parts like the Red Sea at the smallest movement; convenient for the housekeeper, but can play havoc with your love life.
- wardrobe hangers that require a high level of dexterity to remove and replace; do people really still want to steal coat hangers from hotels?
- air-conditioning that needs a degree in thermodynamics to get anything but blasts of sub-zero air.

The low lighting in the bathroom is ideal for shaving or putting on makeup! Even if you move all the miniatures (shampoo, shower gel, shoe polish, etc. etc.) out of the way - probably into your suitcase; you'll never use them, but they are 'free' - there's still only enough room for your toothbrush. Don't architects' bathrooms have cabinets? Even a simple shelf would be useful.

Sleep's going to be impossible. It's either too hot or too cold, and the tram/bus/truck that thunders by every few minutes sounds as though it's coming straight into your room. You'll have time to fill out the form "your comments help us to improve ..." **Maybe someone will take notice this time - dream on!**



Image courtesy of Sky News

BATHFORD PARISH COUNCIL

Notes from the Council Meeting 17 June 2024

NEW COUNCILLORS

Two new Councillors have been co-opted onto the Parish Council.

Andrew Sangster moved to Bathford from Hertfordshire last year and was staying in Kingsdown before taking up residence in his new home in Church Street.



Andrew Sangster

He chaired Hertford Civic Society which had responsibility for local matters and 'preserving the past and shaping the future' of the community and then chaired the Planning sub-committee. In addition, he was involved in the preparation of the District Plan and the County's Minerals plan. He is looking forward to bringing his past expertise to helping Bathford Council's Planning committee.

EXCESS VEGETATION

The wet spring (and summer!) has produced excess growth of vegetation on highways, land and footpaths. The Council has requested BANES Clean & Green team address the problem, on the A363 at the junction with Bathford Hill, at the A4 roundabout on the Box Road, and in Dovers Lane.

We have appointed a contractor to address seasonal cuts on footpaths throughout the parish. We endeavour to monitor the vegetation but we value your vigilance in assisting us by alerting the Clerk of any need for excessive vegetation to be cut back on footpaths. **Report it to clerk@bathford.net**

Ritchard Hood, a civil engineer, recently relocated back from Hong Kong after 24 years where, in addition to his employment in tunnel construction management and rock support, he was involved with his local housing complex committee, and took an active interest in the decisions made for the betterment of the residents and the local community.



Ritchard says: "We are blessed and privileged to be part of this harmonious village cultural life and I feel with my Civil Engineering, and construction background, I can contribute to providing surety, guidance and advice on its upkeep, architectural beauty, and (road) safety. The love of rural surroundings and the countryside in general means I'll endeavour to give my time in contributing to protect our village and the parish of Bathford."

Ritchard lives with his wife Christine and their dog in the heart of the village and enjoys golf, walking and music.

NEXT COUNCIL MEETING
Monday 15 July 19:00
Bathford School

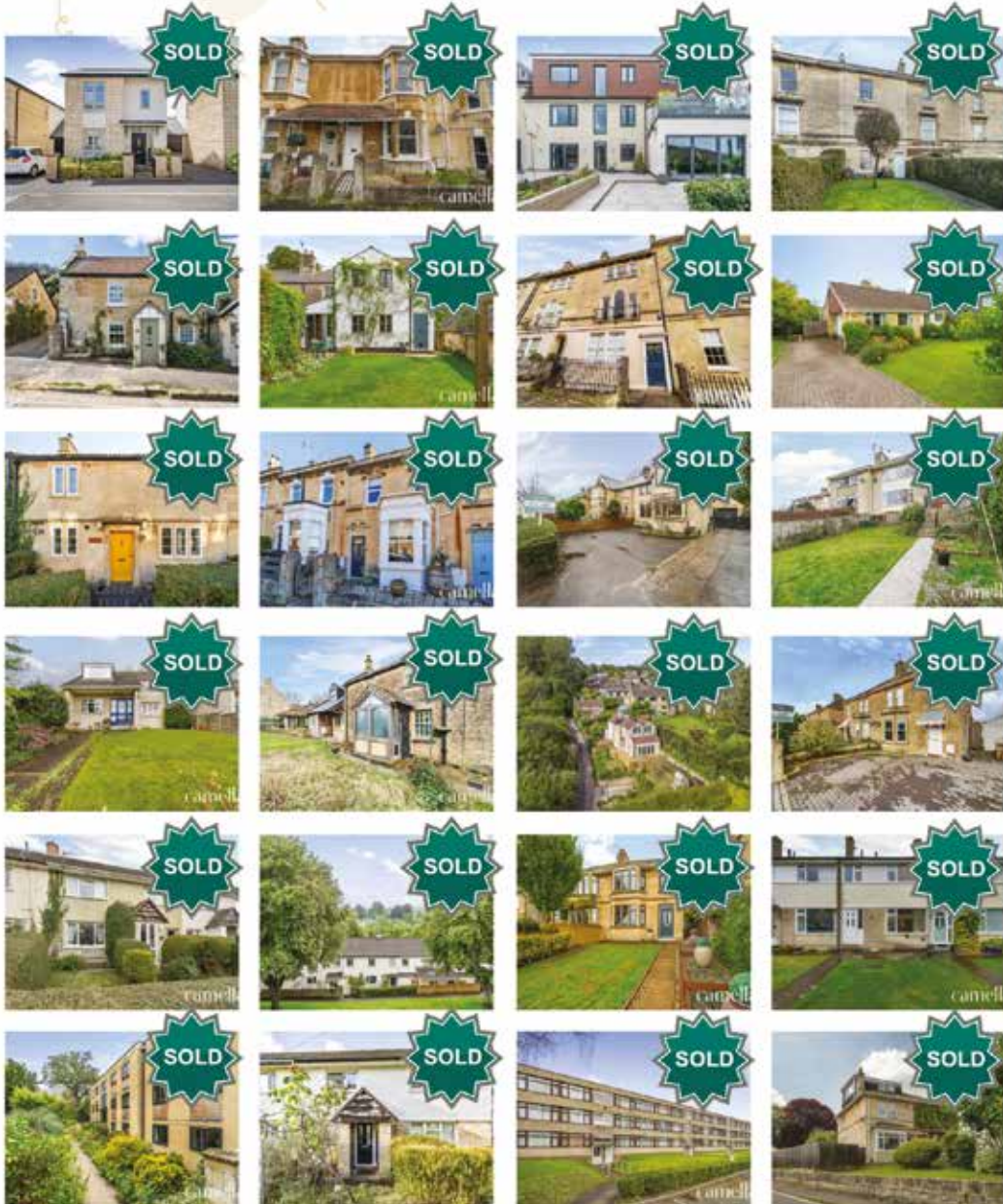
Residents are welcome to attend and raise matters with the Council in the first ten minutes.

Contact: clerk@bathford.net
Tel. 01225 858220

Ritchard Hood
The Bathford Bulletin and Bathford Parish Council cannot accept responsibility for the goods and services advertised.



camella



camella.co.uk

01225 255 321

246 High Street Batheaston

It's our birthday!



DATE	TIME	DETAILS	VENUE
Sun 7 Jul	12:30	Twinning Potluck Picnic (Weather permitting)	Shockerwick House
Sun 7 Jul		Closing date for Village Shop BBQ Entries	Village Shop
Sun 7 Jul	10:00	Service of Holy Communion	St Swithun's Church
Wed 10 Jul	11:20 - 12:05	Mobile Library	Dover's Park, by School
Fri 12 Jul	19:30	Bathford Events Group Quiz Night	Village Club
Sat 13 Jul	10:00	Churchyard Strimming (Volunteers needed)	St Swithun's Church
Sat 13 Jul	20:30	Live Music: Our Kid	Village Club
Sun 14 Jul	11:00 - 17:00	Trash or Treasure Event	Throughout Bathford
Sun 14 Jul	10:00	Contemporary Service	St Swithun's Church
Sun 14 Jul	16:00	Afternoon Praise (for families with children aged 4-11)	St Swithun's Church
Sun 21 Jul	10:00	Service of Holy Communion	St Swithun's Church
Mon 22 Jul	14:00	Film Club - 'Wicked Little Letters'	St Swithun's Church
Wed 24 Jul	11:20 - 12:05	Mobile Library	Dover's Park, by School
Fri 26 Jul	20:00	Live Music: Jazzford Jam	Village Club
Sat 27 Jul	20:30	Live Music: Sharon Stanton	Village Club
Sun 28 Jul	10:00	Welcome Church	St Swithun's Church
Sun 28 Jul	16:30	Evening Prayer (refreshments at 16:00)	St Swithun's Church
Sun 28 Jul	AM & PM	She's Electric	Bailbrook House Hotel
Throughout August		Bathford Flower Show - Schedule and Entry Forms Available from Village Shop	
Throughout August		Eye-Spy Bathford - Treasure Trail Available from Village Shop	
Fri 2 Aug	18:30	Fundraising BBQ for the Village Shop	Village Shop Café
Sun 4 Aug	10:00	Service of Holy Communion	St Swithun's Church
Sat 10 Aug	20:30	Live Music: Chris Rainbow	Village Club
Sun 11 Aug	10:00	Contemporary Service	St Swithun's Church
Sun 18 Aug	10:00	Service of Holy Communion	St Swithun's Church
Fri 23 Aug	20:00	Live Music: Jazzford Jam	Village Club
Sat 24 Aug	20:30	Live Music: Unnamed Male and Female Duo	Village Club
Sun 25 Aug	10:00	Welcome Church	St Swithun's Church
Sun 25 Aug	16:30	Evening Prayer (refreshments at 16:00)	St Swithun's Church

SAVE THE DATES

Wed 4 Sep	17:00 - 19:30	Flower Show Entries	Bathford Parish Hall
Sat 7 Sep	14:30	Bathford Flower Show	Bathford Primary School
Sun 29 Sep		Monthly Afternoon Concerts commence	St Swithun's Church
Thu 28 Nov to Sun 15 Dec		Bath Christmas Market 2024	

whiteley helyar

dedicated residential estate agents



Successfully selling
property in Bathford
for over 40 years

6 Princes Buildings, Bath, BA1 2ED | 01225 44 75 44
rupert@whiteleyhelyar.co.uk | www.whiteleyhelyar.co.uk